
VERMONT HISTORICAL SOCIETY

2020 Annual Report

July 1, 2019 - June 30, 2020



OFFICERS

PRESIDENT
Barbara Mieder, *Williston*

VICE PRESIDENTS
S. Crocker Bennett II, *Hinesburg*
Donald Miller, *Bennington*

TREASURER
Dawn Schneiderman, *Williston*

BOARD OF TRUSTEES

Jan Albers, *Weybridge*
Roger Allbee, *Townshend*
Janet Ancel, *Calais*
David Austin, *South Burlington*
Brian Campion, *Bennington*
John Conlon, *Manchester*
Gary Farrell, *South Burlington*
James C. Gallagher, *Lyndon*
Penrose Jackson, *Hinesburg*
Stephen Kidder, *Swanton*
William Lippert, Jr., *Hinesburg*
Carl Lisman, *Burlington*
Michael McRaith, *South Burlington*
Jim Reardon, *Essex Junction*
Gary Shattuck, *Shrewsbury*
Richard Smith, *Manchester*
Roger Stone, *Burlington*
Nicholas Ward, *Calais*
William Wilson, *Underhill*

PAST PRESIDENT

Richard J. Marek, *Newfane*

EX OFFICIO TRUSTEES

Jason Broughton, *State Librarian*
James Condos, *Secretary of State*

HONORARY TRUSTEES

Sarah L. Dopp, *South Burlington*
H. Nicholas Muller III, *Essex, NY*

SECRETARY

Stephen Perkins, *Williston*

The Vermont Historical Society was chartered in 1838 by an act of the Vermont Legislature. It is an independent 501(c)(3) nonprofit membership organization, governed by a board of trustees.

VERMONT HISTORICAL SOCIETY STAFF

LISA ANGELL
Guest Services Coordinator
(Until Mar 2020)

DIANE CAMPBELL
Office Manager
(Retired Oct 2019)

PAUL CARNAHAN
Librarian
(802) 479-8508
paul.carnahan@vermonthistory.org

EILEEN CORCORAN
Community Outreach Manager
(802) 479-8522
eileen.corcoran@vermonthistory.org

JESSIE DALL (Began Sept 2019)
Operations & Membership Associate
(802) 479-8503
jessie.dall@vermonthistory.org

CLAIRE GILBERTSON
Library Assistant
(802) 479-8509
claire.gilbertson@vermonthistory.org

SHANA GOLDBERGER
(Began Mar 2020)
PR & Sales Coordinator
(802) 828-1414
shana.goldberger@vermonthistory.org

TERESA TEIXEIRA GREENE
(Began Dec 2019)
Collections Manager
(802) 479-8517
teresa.greenec@vermonthistory.org

JOHN GROSVENOR
Director of Finance & Operations
(802) 479-8513
john.grosvenor@vermonthistory.org

AMANDA GUSTIN
Public Program Manager
(802) 479-4264
amanda.gustin@vermonthistory.org

TORI HART
Director of Development
(802) 479-8516
tori.hart@vermonthistory.org

VICTORIA HUGHES
Museum & Education Manager
(802) 828-1413
victoria.hughes@vermonthistory.org

MATTHEW JOHNSON
Print Media & PR Coordinator
(Until Mar 2020)

DAN LORD
Facilities Manager
(Until Sept 2019)

KATE OLNEY
Director of Development & Community Relations
(Until Mar 2020)

STEPHEN PERKINS
Executive Director
(802) 479-8515
steve.perkins@vermonthistory.org

MARY LABATE ROGSTAD
Registrar
(Retired Sept 2019)

LAURA ROONEY
Program Assistant
(802) 479-8524
laura.rooney@vermonthistory.org

JODI SHIPPEE
Library Assistant

MARJORIE STRONG
Assistant Librarian
(802) 479-8507
marjorie.strong@vermonthistory.org

GAIL WIESE
Library Assistant

PATTY WILEY
Library Assistant
(802) 479-8509
patty.wiley@vermonthistory.org

THANKS

to all our volunteers, who generously donated amazing amounts of time, talent, and energy on behalf of the Vermont Historical Society. Because of you, we have the impact and outreach of an organization twice our size.

Jan Albers	Wendy Dale	Eve Jacobs-Carnahan	Jesse Scarlato
Roger Allbee	Barbara Dall	William Jenney	Inge Schaefer
Janet Ancel	Susan D'Amico	Stephen Kidder	Kay Schlueter
David Austin	Fleet Davis	Ronald Krauth	Dawn Schneiderman
Blair Austin-Bradley	Lee Davis	Alex Lehning	Gary Shattuck
Nancie Austin-Bradley	Martha Deiss	Timothy Leno	Jodi Shippee
Barbara Baraw	Paul Deslandes	William Lippert	Douglas Slaybaugh
Judeen Barwood	Bridget Devlin	Carl Lisman	Richard Smith
Jane Belcher	Mariessa Dobrick	Richard Marek	Roger Stone
Crocker Bennett	Sarah Dopp	Jon Mathewson	Grace Sweet
S. Crocker Bennett II	Jamie Duggan	Mike McRaith	Margaret Tamulonis
Yvonne Benney Basque	Kathryn Dungy	Barbara Mieder	Amanda Thibault
Caitlin Blake	Anita Ellero	Don Miller	Roberta Tracy
Sally Blanchard-O'Brien	Lisa Evans	Lori Morse	Sophia Trigg
Marianne Book	Gary Farrell	Jill Mudgett	Ann Wade
Alice Boone	Ruth Finn	H. Nicholas Muller III	Marilyn Wallace
David Braun	Aiyana Fortin	Robert Murphy	Ben Ward
Jason Broughton	James Gallagher	Eily Murray	Nicholas Ward
Lisa Brucken	Ronald Gallas	Josh Muse	Gail Wiese
Rowland Brucken	Marjorie Garfield	Rachel Muse	Carl Williams
Joseph Byrne	Elizabeth Gilligan	Rachel Onuf	William Wilson
Alexandre Caillot	Robin Goeman	Susan Ouellette	Chris Winters
Hollis Caillot	Naomi Graham	Michele Pagan	
Jacqueline Calder	Allison Gregory	Emily Parkany	
Brian Campion	Bobbie Grothe-Penney	Brenda Perkins	
Edda Cardenas	Linda Gustafson	Steve Perkins	
John Carnahan	Peter Gustafson	Nicole Phelps	
Mary Carnahan	Elise Guyette	Rudolph Polli	
Maria Carriere	Alyssa Hamel	Fred Pond	
Jody Chamberlin	Edith Harding	Bonnie Potter	
David Chambers	Dwight "Harry" Harrington	Robert Rachlin	
Sarah Chute	John Hart	Nancy Remsen	
Heather Cipolla	Ben Heintz	Grant Reynolds	
Claudia Clark	Paul Heller	Newton Rose	
James Condos	Makayla Hough	Andrea Rosen	
John Conlon	Penrose Jackson	Christine Scales	



The arrival of the pandemic in March made this a very unusual year for the Vermont Historical Society. However, the staff of the VHS under the leadership of our excellent Executive Director, Steve Perkins, adapted smoothly, and the Society continued to fulfill its mission of engaging both Vermonters and "Vermonters-at-heart" in the exploration of our state's rich heritage, albeit in a virtual manner for the past six months.

Before the arrival of the pandemic there were many exciting things happening. Here are just a few: The VHS published Paul Searls's book *Repeopling Vermont*, and in conjunction with the Department of Libraries we organized community discussions around the state. We restored the Bacon banjo and sponsored a *Banjo Afternoon* program in Montpelier where Vermont banjo players entertained the audience on their own banjos before giving the Bacon banjo a try. The Snelling Room at the Pavilion underwent restoration. It now has on exhibit many of the portraits from our extensive collection along with a written guide for visitors to learn about both the artists and the Vermonters portrayed. The Snelling Room also houses an exhibit on the multiple statues of Ceres, which have long adorned the top of the capitol building. Other new exhibits this year have focused on *Myths & Legends of the Connecticut River*, the *Long Trail*, new *Icons and Oddities* chosen by staff members, *Norman Rockwell's Arlington: America's Home Town* (sponsored by The Canfield Gallery and The Russell Collection of Vermontiana, of the Martha Canfield Memorial Free Library in Arlington), and *The Dames* and *The Sheldon Relic Chair* (sponsored by the Vermont Folklife Center, National Society of Colonial Dames of America in the State of Vermont, and Middlebury College).

Our rich exhibits have all been accompanied by rich programming organized by our Program Manager, Amanda Gustin. She is also responsible for our other successful programs such as Third Thursday lectures and Vermont trivia, and she has been the driving force behind efforts to document the COVID-19 pandemic for future historians.

We continue to work with local historical societies throughout Vermont. Last year we sponsored "listening sessions" around the state to get feedback on how we can best help those societies fulfill their own missions. These have resulted in several virtual roundtables which have proven to be very popular. Local societies have come to rely on the excellent guidance provided by Eileen Corcoran, our Community Outreach Manager.

Education is a key part of our mission. School visits to the *Freedom and Unity* exhibit in Montpelier, as well as homeschool classes at the Pavilion, under the leadership of

Victoria Hughes, our Museum & Education Manager, were on track to set record numbers until schools closed in March. At that point, she focused her energies on online resources for students. The ever-popular Vermont History Day was scheduled to take place in April with a record number of participants signed up. We transitioned to a virtual competition with a smaller number of students, but everyone - students and judges alike - were appreciative that they could still take part.

The closure of the library meant that fewer patrons came in person, but the library staff, under the leadership of Librarian Paul Carnahan, transitioned smoothly to helping patrons online. Fewer patrons meant that library staff were able to work on a backlog of cataloging and other projects. Likewise, our Collections Manager, Teresa Greene, made good use of the quiet days at the History Center, working diligently in the basement of the building cataloging and weeding the collection of duplicates and unrelated materials.

All our activities require monetary support, and for that we are grateful to the State of Vermont. We are also lucky to have a gifted Director of Development in Tori Hart. Under Tori's leadership we sponsored our second Freedom and Unity Luncheon last September, and later in the fall we unveiled a new Donor Panel at the Pavilion to honor our many generous members.

This has definitely been an unusual year for the VHS, but despite the obstacles the pandemic has presented, we have continued with our mission of preserving the past, informing the present, and promoting Vermont's shared legacy for the future.

It is my pleasure to report that all is well at the Vermont Historical Society. For that I would like to thank the donors, the staff, the Board of Trustees, the State of Vermont, and our many volunteers who make it all possible.

Sincerely,

A handwritten signature in cursive script that reads "Barbara".

Barbara Mieder, *President*



It seems very odd to sit down and write an introduction to our Fiscal Year 2020 Annual Report. As with most of us, the summer and fall of 2019 seem to be a distant memory of another time and place. The global pandemic and the many impacts on our lives, communities, businesses, and jobs has been all-consuming. Please forgive me if I dwell on the second half of our year, but Vermont Historical Society's response to a rapidly shifting paradigm has been commendable.

Much of the first half of our year was spent gathering information, listening to our community, and creating plans for programs, exhibits, and initiatives. As we rolled into 2020, staff were looking forward to our major Catamount exhibit, new and exciting initiatives around local society support, and fun celebrations like VT Eats! The Italian Experience in Barre. The complete closure of our physical locations quickly ended these plans and forced us to think deeply about the service we provide our community and how to do that in a remote, and often virtual way.

Our strategic plan offered great guidance to us in this journey. The four goals all laid out specific strategies for providing access to collections, support to local societies, compelling programs, and vital guidance to our school-age children. With the pandemic health-response forcing us to work remotely, we were able to focus on new initiatives and revisit lagging projects that needed attention.

I am so proud of all that we accomplished I cannot even begin to enumerate the successes in this brief introduction. The following report summarizes the numerous activities we undertook throughout the year under each of our strategic goals. Our audience grew and changed in many meaningful ways – participants joined us from throughout the U.S., volume of participation grew by a factor of 10, and those interacting with our programs and product presented as much more diverse in culture and age. Whether we wanted to or not, we became a leader in our industry, providing a clearinghouse for operational and response information as well as model reopening and management plans for our field.

Like most other sectors of our economy we had to do this with highly restricted resources. Fundraising event income and earned revenue from our museum and store disappeared for more than a quarter of our year. Thank you to our donors and members who continued to support our good work. Your contributions along with the timely receipt of competitive relief grants helped VHS weather the first part of this storm. We will be seeing the impacts on our budget and operations for years to come and are working actively to plan for a multitude of eventualities. Your continued support is critical and we will rely on your membership and donations to allow the society to continue our service to Vermont.

I look forward to facing the changes to our field head-on; leading the conversation as we contemplate permanent changes to operations, programs, and exhibits as well as fundamental issues of diversity, inclusion, community and voice. Thank you again for your ongoing and generous support.

Warmest Regards,

A handwritten signature in dark ink, appearing to read 'Stephen Perkins'. The signature is fluid and cursive, written over a light-colored background.

Stephen Perkins, *Executive Director*

FY 2020 Unaudited VHS FINANCIAL OVERVIEW

Statement of Activities

Revenue

	FY 2019	FY 2020
Contributions and Bequests	490,051	566,726
State Appropriation	1,036,819	984,956
Investment Income	142,191	98,072
Admissions, Fees and Earned Income	44,920	37,839
VT History Bookstore Sales	44,676	33,753
State and Federal Grants	1,320	60,828
Other Revenue	191,134	191,134
TOTAL REVENUE	1,951,111	1,973,309

Expenses

	FY 2019	FY 2020
Public Programs	146,313	340,464
Library	326,253	303,198
Membership	288,305	276,435
Museum	251,756	282,085
Administration & Finance	365,849	430,451
Development	192,705	158,053
Education	276,441	197,110
League of Local Historical Societies	166,383	59,730
VT History Bookstore/Guest Services Museum	84,684	57,519
VHS Publications	37,127	54,369
TOTAL EXPENSES	2,135,816	2,159,414

Depreciation of capital assets allocated across expense lines. Total depreciation for FY19 was \$256,721 and for FY20 was \$254,864. Operational revenues and expenses were balanced each year.

Balance Sheet

Assets

	FY 2019	FY 2020
Cash	333,497	482,504
Other Current Assets	411,662	386,551
Investments	2,247,287	2,254,802
Property Plant and Equipment	9,403,119	9,452,328
Accumulated Depreciation	-2,653,606	-2,870,108
Total Property Plant & Equipment	6,749,513	6,582,220
TOTAL LIABILITIES & NET ASSETS	9,741,959	9,706,077

Liabilities

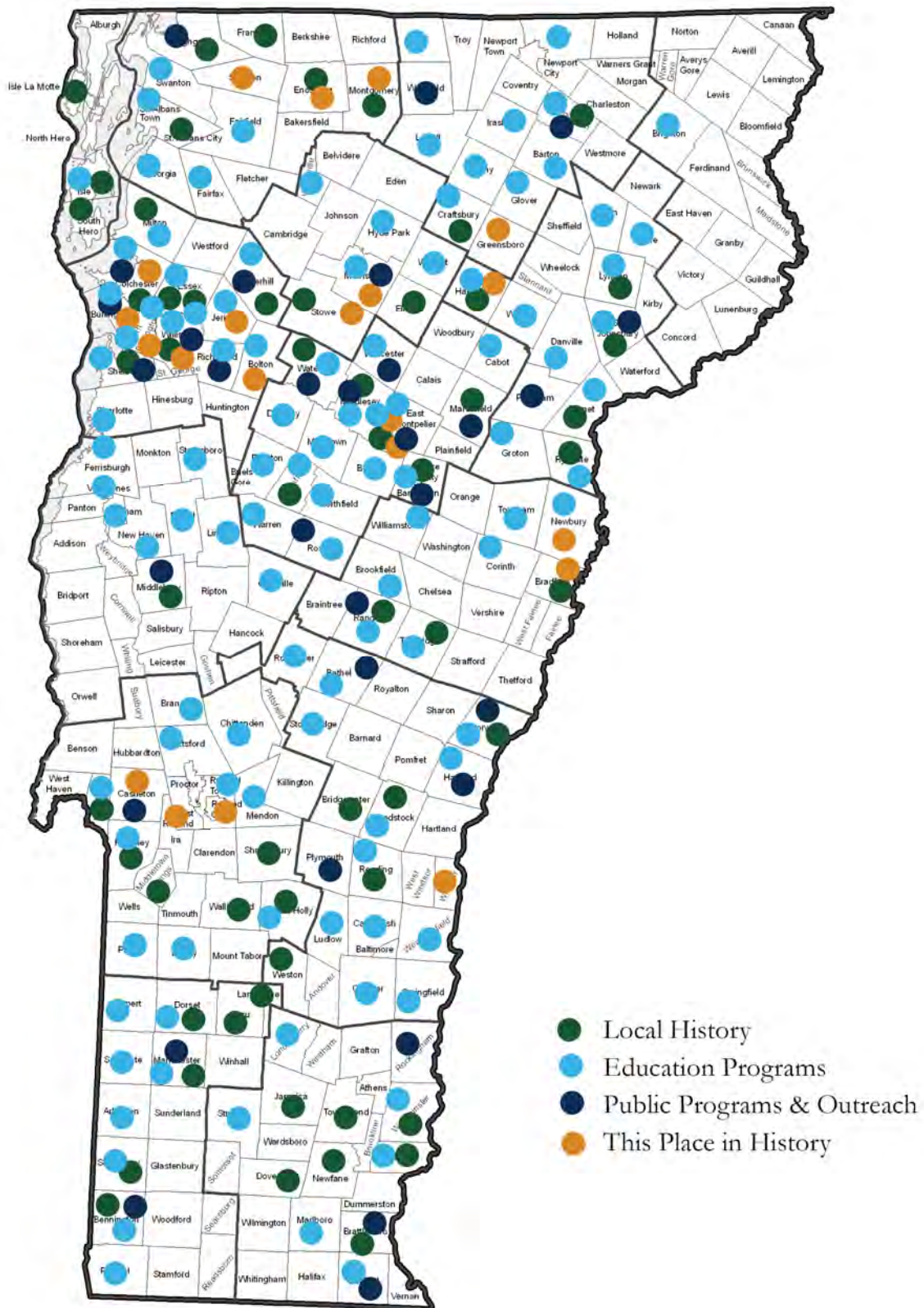
	FY 2019	FY 2020
Accounts Payable	77,674	76,419
Short-term Liabilities	129,152	320,705
Mortgage Payable	1,148,343	1,108,268
TOTAL LIABILITIES	1,355,169	1,505,392

Net Assets

	FY 2019	FY 2020
Beginning Net Assets	8,571,495	8,386,790
Change in Net Assets	-184,705	-186,105
ENDING NET ASSETS	8,386,790	8,200,685

VHS Statewide Impact

FY20 (July 2019-June 2020)

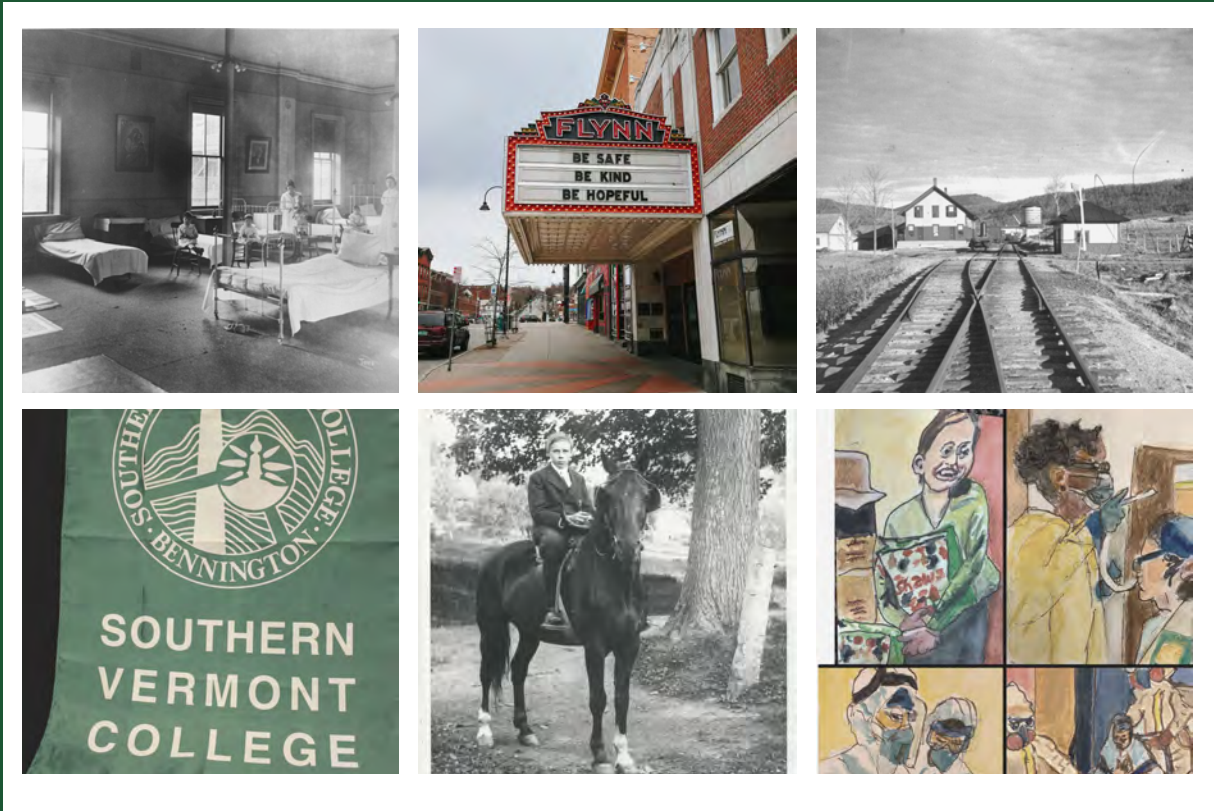


FY20

CHARITABLE CONTRIBUTIONS IN ACTION

Strategy One:

Provide Vermonters and Vermonters-at-heart the resources to access Vermont's rich historical Collections from anywhere in the world.



2,327 new titles added to online catalog; 435 images added to Digital Vermont, our online digital archive; 316 items crowd-sourced on our COVID-19 digital archive; 144 items redesigned for the Vermont Women's History Database; 1,425 images added to VermontCivilWar.org; 200 pieces of correspondence from Vermont Equal Suffrage Association (1919-1920) added to CDI.uvm.edu; 25,000 digital records converted from PastPerfect to new collections management software, CatalogIt; 13% of collections inventory completed.

FY20

CHARITABLE CONTRIBUTIONS IN ACTION

Strategy Two:

We will recognize and support local history efforts; understanding that local societies are an integral part of sharing and preserving Vermont's story.



7 local history engagement sessions, accompanying survey, and report to the field; 8 LLHSM Achievement Awards given; 11 scholarships awarded for NEMA Annual Conference in Burlington; 3 exhibit planning and production webinars held for Technology 2020 crowdsourced exhibit; 3 exhibits opened in the Local History Gallery (*Norman Rockwell's Arlington*, *The Dames*, and *The Sheldon Relic Chair*); 8 virtual roundtables; and over 30 organizations directly assisted via advice and site visits.

FY20

CHARITABLE CONTRIBUTIONS IN ACTION

Strategy Three:

Vermonters will increase their knowledge of our state's past and understand how their unique experience impacts and shapes this ongoing narrative. Guests will enrich their visit through deeper understanding of Vermont and its people.



2 books published (*Repeopling Vermont* and *The Rebel and the Tory*);
2 webinars on "Moderating Difficult Conversations"; 5 community
conversations hosted across the state, informed by *Repeopling Vermont*;
10 additional community conversations held by partner organizations;
Banjo Afternoon program, 2nd Freedom & Unity Luncheon; 9 Third
Thursday lectures; 4 exhibits opened; 5 Before Your Time podcast
episodes; Green Mountain Chronicles relaunched; 9 Vermont Trivia
nights; 6-week "Introduction to Museum Work" class piloted.

FY20

CHARITABLE CONTRIBUTIONS IN ACTION

Strategy Four:

To build resilient and connected communities, students will understand Vermont's history and its place in the broader world.



500 students and parents participated in History for Homeschoolers (in-person and virtual); photo booth installed in *Freedom & Unity* exhibit; 321 students engaged in hands-on-history programs; 7,381 people visited the Vermont History Museum, prior to March closure, including 1,800 students on field trips; 167 students with 113 projects participated in virtual Vermont History Day; 49 student competed in National History Day; 7 weeks of Vermont History content provided for Good Citizen Challenge's Coronavirus Challenge; 100+ educational resources added to VHS website.

We are deeply grateful to you, our many donors and members, who help preserve Vermont's rich history, so each generation can learn from the legacy of our past. Your generous contributions provide the critical support needed to host public programs, educate students, present exhibits, publish unique stories, and preserve and share Vermont's treasures.

The Legacy Circle is comprised of individuals who share a love of learning, a sense of wonder about Vermont and a commitment to ensuring our cultural and scientific heritage is passed to future generations. By supporting the Vermont Historical Society through an estate or life income gift, these individuals have recognized the timeless value of VHS's work and the enduring place it has in Vermont history.

Dawn K. Andrews
Anonymous
Jane Campbell
Michael and Laurie Curtis
Rolf Diamant
Sarah L. Dopp
John Phipard Dumville
Leah G. Goat
J. Kevin Graffagnino

Mark and Julie Hudson
Penrose Jackson
John A. Leppman
Richard and Linda Marek
Barbara and Wolfgang Mieder
Addison and Adelaide Minott
H. Nicholas Muller III
and Carol A. Muller
Martha E. Nye

Kay and Max Schlueter
Richard B. Smith
Lola Van Wagenen
and George Burrill
Nick and Leslie Ward
Laura Warren
Virginia Cabot Wood
Allen Rice Yale, Jr.

The 1838 Society, named in honor of the organization's founding year, recognizes loyal individuals, families, and organizations based on their lifetime giving of \$5,000 or more to the Vermont Historical Society. Members of the 1838 Society are among a timeless cadre of philanthropists who envision a future of infinite opportunity for VHS.

Maple (\$100,000+)

A. D. Henderson Foundation, Inc.
Allen L. Stratton Trust
Anonymous
Barbara J. Beecher Estate
Joan T. Bok
J. Brooks Buxton Estate
Cabot Creamery Cooperative
Sarah L. Dopp
Ellison Foundation
Ronald J. York Estate
Fiduciary Charitable Foundation
Albert H. Gordon
Mrs. Serena Hatch
IBM
Institute of Museum & Library Services
Margaret Mitchell Mather
J. Warren and Lois Howe McClure
Barbara and Wolfgang Mieder
National Endowment for
the Humanities
National Life Group Foundation, Inc.
Mrs. Shirley Nichols
David Perrin

Terry Phillips
Archbishop Jason H. Sanderson
Save America's Treasures Program
State of Vermont, Governor's Office
The Gordon Fund
Times Argus
U.S. Department of Housing
and Urban Development
Lola Van Wagenen and George Burrill
Vermont Housing &
Conservation Board
Vermont Humanities Council
Walter Cerf Community Fund
Alan H. Weiss Estate

Oak (\$50,000 - \$99,999)

Eleanor Angell Estate
Atwater Kent Foundation
Cynthia H. Babbott Living Trust
Mrs. Nina Bacon
Bay and Paul Foundations, Inc.
Central Vermont Public
Service Corporation
Marianne C. Ciotti Estate

Nicholas R. Clifford
Virginia Low Coolidge
Nancy L. Dodge Estate
Skip and Wendy Farrell
Fidelity Foundation
Mrs. Marjorie P. Fisher
Margot J. George Estate
Jack and Dorothy Byrne Foundation
Jessie B. Cox Charitable Trust
KeyBank
Stephen B. Martin
McClure Foundation
Marion Galbraith Merrill Estate
Dorothy and John Mitchell
Kendall A. Mix
H. Nicholas Muller III
and Carol A. Muller
Joann H. Nichols Estate
Northfield Savings Bank
Sanborn Partridge
Paul & Virginia Cabot Charitable Trust
Malcolm and Gladys Severance
Janet M. Strauss
Verizon Inc.

Nick and Leslie Ward
WCAX Mount Mansfield Community
Television, Inc.
Windham Foundation
Woodstock Foundation, Inc.
Yankee Publishing Inc.

Birch (\$25,000 - \$49,999)

Alcyon Foundation
Patricia Passmore Alley
Alma Gibbs Donchian Foundation
Dawn K. Andrews
Jane C. Beck
John and Mary Carnahan
Chittenden Bank Community Fund
Ellen C. Desmeules, Trustee
Carmen L. Dente
John P. Dumville
Freeman Foundation
Judy Geer and Dick Dreissigacker
George W. Mergens Foundation
J. Kevin Graffagnino and Leslie Hasker
Teresa Griswold
Hestnes Family
Mr. and Mrs. Harold Hestnes Esq.
Edward A. Hoyt, Jr. Estate
Johnson Family Foundation Fund
Lane Press, Inc.
John A. Leppman
Lisman Family
Brig. Gen. Edwin Loren Little
Bob and Polly Maguire
Maple Capital Management, Inc.
Marie H. Ankeny Charitable
Legacy Fund
Robert A. Mello
and Priscilla K. Reidinger
George D. Milne Family
Addison and Adelaide Minott
Monterey Fund, Inc.
Lyman Orton
Patrick Foundation
The Honorable Louis P. Peck
Judith and James Pizzagalli
Mr. Fletcher D. Proctor
H. Driscoll Reid Family
Grant and Jo Reynolds
Robert and Virginia Mitchell
Charitable Remainder Trust
Kay and Max Schlueter
Gary and Kate Shattuck
Ms. Anne F. Spencer
Karen K. Steele
Roger and Kit Stone
Tirzah J. Sweet Trust
The Boston Foundation
W. Russell and Caroline W. Todd
Turrell Fund
Mrs. Charles E. Tuttle, Jr.
Union Mutual of Vermont Companies
Vermont Department of Buildings
& General Services
Mr. Robert T. Wetherbee Trust
Virginia C. Wood

Christopher S. Wren

Ash (\$10,000 - \$24,999)

Alice A. Adams
Joan Adams
Mrs. George D. Aiken
Miss Hazel J. Anderson
W. Thomas Anderson
Jean L. Andrews
Anonymous
Mimi Baird
Susan C. Beers
Crocker Bennett and Christina Boerner
BlueCross BlueShield of Vermont
Elizabeth and Theodore Bogner
Braxton Fund, Inc.
Randy and Andrea Brock
John Cadwell
Douglas and Katie Campbell
Jane Campbell and Ted Zilius
Cargill Animal Nutrition
David C. Cary
City of Barre
Community National Bank
David Greenewalt Charitable Trust
Allen F. Davis, Ph.D.
Marlene Dietz
Dorothea S. Jones Living Trust
Dorothy N. Burnette Estate
Muriel Low Durgin
Dwight Asset Management Company
Mrs. Betty Ann Dzelzitis
Frank B. Easton, Jr.
Ruth Burt Ekstrom
Estate of Deborah P. Clifford
Mary Beardsley Fenn
Susan and Don Foster
Joan Fuller
James and Susan Gallagher
Robert T. Gannett, Esq.
Genealogical Society of Vermont
Neil and Margot Goodwin
Green Mountain Power Corporation
Hugh and Shana Griffiths
Burt and Marjorie Hamrell
Mary Brady Hart Estate
Patricia L. Haslam
Richard O. Hathaway
Hazelett Corporation
Nancy D. Hill
Barbara J. Holt Estate
Mark Hudson
Mrs. Joan D. Huguenin
John M. Bissell Foundation
KeyBank Foundation
Laurance & Mary Rockefeller/
Woodstock Foundation Fund
Laurence W. Leonard
Norman L. Lewis
Lintilhac Foundation, Inc.
Lucy Downing Nisbet Charitable Fund
Dr. and Mrs. William H. Luginbuhl
Peter T. Mallary
R. DeWitt Mallary

Linda and Richard Marek
Mascoma Savings Bank Foundation
Dr. John E. Mazuzan, Jr.
Robert and Dorothy McAllister
Mr. John S. McCormick Jr.
Merchants Bank Foundation, Inc.
Virginia W. Mitchell
Amy and Joseph Morel
National Grid USA Service Corporation
National History Day
National Society of Colonial Dames of
America in the State of Vermont
Oakland Foundation
Sarah and Duncan Ogden
Mr. and Mrs. James H. Ottaway, Jr.
Harriet Stone Patrick
Paul Frank + Collins P.C.
Raymond and Jean Pecor
Faith L. Pepe
Mr. and Mrs. Ellis Phillips, Jr.
PhotoArk
Ms. Aileen B. Pinkerton
Nancy and Bob Pope
Katharine and E. Miles Prentice III
Richard E. & Deborah L. Tarrant
Foundation
Anita and Gary Rogers
Louise and Andres Roomet
The Honorable Thomas P. Salmon
Stella and Walter Sargent
Andrew F. Saxe
Michael and Nancy Sherman
Craig and Susan Sim
Stowe Street Emporium
Mr. Frank A. Suchomel, Jr.
Steven C. Swett
Dr. Winn L. Taplin
TD Banknorth
Rhoda W. Teagle
The Reddus Foundation
Dave and Pat Thomas
Vermont Agency of Transportation
Vermont Business Magazine
Vermont Division for Historic
Preservation
Vermont Mutual Insurance Group
Vermont State Employees Credit Union
Ms. Nancy Ann Walker
Laura Warren
Wells Fargo Bank, N. A.
Mrs. Constance F. West
Whitman Communications, Inc.

Beech (\$5,000 - \$9,999)

Laura P. Abbott
Adelard A. and Valeda Lea Roy
Foundation
Anonymous
Peter Anthony and Marsha Kincheloe
Atwater Kent Estate
Mr. Hamilton V. Bail
Bates & Murray, Inc.
Carmen Beck
James M. Betts, M.D.

Black River Design
 Lucien J. Bolduc Estate
 Bond Auto Parts, Inc.
 Margaret Bracken
 Mr. Lincoln C. Brownell
 Edward Brynn
 George C. Burrill
 Cabot Family Charitable Trust
 Jacqueline Calder
 Carris Financial Corporation &
 Subsidiary
 Jack Carter
 John and Deborah Cave
 Mary Ann and Bob Chaffee
 Brianne E. and David S. Chase
 William M. Chester, Jr.
 Church of Jesus Christ of
 Latter-day Saints
 Concept 2 Rowing
 Anne Straiton Conlin
 Muffie Conlon
 Valerie and Kevin Crowley
 Gainer B. Davis, Ph.D.
 Denis, Ricker & Brown, Inc.
 Dennis J. Devereux
 Rolf Diamant and Nora Mitchell
 Dorothy and Jim Douglas
 Downs Rachlin Martin PLLC
 John and Heather Dwight
 Ellen C. Hill Charitable Remainder Trust
 Ellis L. Phillips Foundation
 Sylvia Erhart
 Estelle H. Gough Trust
 Gary and Jane Farrell
 Marguerite H. Ferris Estate
 Helen M. Flint
 John Follett and Winifred McDowell
 Foundation for Advancement
 in Conservation
 Franklin Templeton Charitable
 Giving Fund
 Gannett Foundation
 Helen Giessing
 Mr. Frederic C. Guile
 Andrew F. Gurley
 Guy W. Nichols Foundation
 H.A. Manosh Corporation
 Mr. and Mrs. Roby Harrington III

Ms. Marion O. Harris
 Harvey and Pamela Geiger
 Charitable Fund
 Dawn Hazelett
 Helen P. Dumville Trust
 Laura Heller
 Dr. W. Donald Horrigan
 Charles E. Humberger
 International Paper Company
 Frank and Elaine Ittleman
 Penrose and Schuyler Jackson
 Tim Jerman
 John Hancock Financial Services Inc.
 Mrs. Barbara M. Jordan
 Preston and Virginia Kelsey
 Ron and Sandy Kilburn
 William L. King, Jr.
 Sibyl V. Kirby
 Lake Champlain Basin Program
 Landon Family Foundation
 Mr. Willis T. Lansford
 Hubert and Mary Lechevalier
 Carl and Deborah Lisman
 Local 22/Local 44 News
 David M. Ludlum
 Lyrasis
 Tom and Charlotte MacLeay
 Main Street Landing Company
 Rev. and Mrs. R. DeWitt Mallary, Jr.
 Marianne G. Faulkner Charitable Trust
 Peter and Isabella Martin
 Jon D. McKee Estate
 Mr. Keniston P. Merrill
 Carolyn Crowley Meub
 Microsoft Corporation
 Vera Bates Millham Estate
 Montpelier Community Fund
 New England Power Service Co., Inc.
 Graham Stiles Newell
 Martha E. Nye and Mary Ann Barnes
 Mr. Richard B. Nye
 Ms. Ruth Partridge
 Katherine Paterson
 Karl Pfister III
 Phoenix Publishing
 Pike Industries
 Pizzagalli Foundation
 Philip and Roberta Puschel

Randolph National Bank
 John and Patti Reid
 Stephen D. Reid
 Margaret and Alban Richey
 Robert F. Cooper Foundation
 Pat Robins and Lisa Schamberg
 Dr. Charles A. Robinson
 Roman Catholic Diocese of Burlington
 Peter Rosengarten
 John and Ann Runnette
 Mr. and Mrs. George P. Sakellaris
 Mr. Sheafe Satterthwaite
 Inge Schaefer
 Shelburne Shipyard, Inc.
 Mrs. Ann Smallwood
 Richard Walbridge Spaulding
 Split Rock Charitable Foundation
 Rosamond Kent Sprague
 Elizabeth Steele and Scott Hammond
 William W. Steele
 William and Judy Stevens
 Helen Irwin Stoddard
 Dr. Neil R. Stout
 Howard and Linda Strong
 Swenson Granite Company, LLC
 Swets Information Services Inc.
 The Flow of History
 The Rutland Herald
 The William Bryant Foundation
 W. Nicholas and Joan Thorndike
 TPS Eastern Region
 Travelhost of Vermont
 Vermont Association of Snow Travelers
 Vermont Commission on Women
 Education & Research Foundation
 Vermont Country Store
 Vermont Magazine
 Vermont Public Radio
 Vermont Tent Company
 Vermont-NEA, Inc.
 Vermontvacation.com
 Roderic and Patricia Vitty
 Waitsfield and Champlain Valley
 Telecom
 Washington Electric Cooperative
 WDEV Radio Vermont Group
 Donald and Patricia Whelpley

The Freedom & Unity Circle celebrates and recognizes the commitment and generosity of individuals, families, and organizations who give at a leadership level. Recognition in the Freedom & Unity Circle begins with an unrestricted pledge or cash contribution of \$1,000 or more. These gifts provide critical, immediate-use funds for VHS's public programs, educational initiatives, exhibit support, and areas of greatest need.

Visionary (\$25,000+)
 Nancy L. Dodge Estate
 David Perrin

Steward (\$10,000 - \$24,999)
 Anonymous
 Barbara J. Holt Estate

Barbara and Wolfgang Mieder
 Lola Van Wagenen
 and George Burrill

Ambassador (\$5,000 - \$9,999)

Alcyon Foundation
Virginia Low Coolidge
Ruth Burt Ekstrom
H. Nicholas Muller III
and Carol A. Muller
National Life Group
Lyman Orton

Curator (\$2,500 - \$4,999)

Sarah L. Dopp
Hugh and Shana Griffiths
Patrick Robins
and Lisa Schamberg
Roger and Kit Stone
Nick and Leslie Ward

Preservationist (\$1,000 - \$2,499)

Dawn K. Andrews
Anonymous
David and Joanne Austin
Susan C. Beers

Crocker Bennett
and Christina Boerner
Jacqueline Calder
John and Mary Carnahan
David C. Cary
Joanna and Stephen Caswell
Fleet Davis and Emily Parkany
Bob and Joyce Desautels
Dorothy and Jim Douglas
Gary and Jane Farrell
Roger and Gertraud Frey
James and Susan Gallagher
Judy Geer and Dick Dreissigacker
Tori and John Hart
Mrs. Serena Hatch
Nancy D. Hill
Robert P. Kirby
Sibyl V. Kirby
Laurance & Mary Rockefeller
/Woodstock Foundation Fund
John A. Leppman
Carl and Deborah Lisman

Linda and Richard Marek
Stephen B. Martin
Robert A. Mello
and Priscilla K. Reidinger
JoAnne and Timothy Murad
Doug Nedde
Dan and Betty Newcomb
Stephen and Galen Perkins
Judith and James Pizzagalli
Katharine and
E. Miles Prentice III
Philip and Roberta Puschel
Grant and Jo Reynolds
Kay and Max Schlueter
Gary and Kate Shattuck
Mary C. Speare
Laura Warren
Larry and Beth Welton
Mrs. Constance F. West
William and Mary Wilson
Christopher S. Wren

Designated Contributions \$1,000+Exhibitions

Alma Gibbs Donchian Foundation
Cabot Creamery Cooperative

Genealogy Workshops

Karen K. Steele

League of Local Historical Societies
& Museums

Jack & Dorothy Byrne Foundation
Oakland Foundation
Walter Cerf Community Fund

Leahy Library

John M. Bissell Foundation

Kay and Max Schlueter
Gary and Kate Shattuck
Mr. William W. Steele
Donald and Patricia Whelpley

Public Programming

Gary and Kate Shattuck

Publications

H. Nicholas Muller III
and Carol A. Muller
Gary and Kate Shattuck

Vermont History Center

Tony and Jackie Marro

Vermont History Day 2020

George W. Mergens Foundation
Johnson Family Foundation Fund
KeyBank
Peter Swift and Diana McCargo

Vermont History Explorer Website

Cooper Family Foundation, Inc.
National Life Group
Foundation, Inc.

Vermont History Museum

Montpelier Community Fund

The Circle of Friends recognizes those individuals and organizations who have made unrestricted and/or restricted contributions to the Vermont Historical Society during the year, totaling less than \$1,000.

Diamond (\$750 - \$999)

Peter Anthony
and Marsha Kincheloe
Benevity Community Impact Fund
John and Judith Farmer
Main Street Landing Company

Platinum (\$500 - \$749)

Accura Printing
Roger and Ann Allbee
Patricia Passmore Alley
Anonymous
Atwater Kent Foundation
Catamount Solar LLC

Claudia and Allen Clark
Community National Bank
Muffie Conlon
Co-operative Insurance Companies
Don and Marty Dewees
Elizabeth H. Dow, Ph.D.
Pete and Lynn Green

Ms. Marion O. Harris
Gerald K. and Virginia A. Hornung
Mrs. Joan D. Huguenin
Marilyn Larkin
Dr. and Mrs. William H. Luginbuhl
Don Miller
Amy and Joseph Morel
Northfield Savings Bank
Noyle W. Johnson Group
Kate and Kelton Olney
Patricia W. Osmond
Nancy and Bob Pope
Mr. Fletcher D. Proctor
Andrew F. Saxe
Sheehey Furlong & Behm P.C.
Swenson Granite Company, LLC
Union Mutual of Vermont
Companies
UVM Department of History
Vermont Automobile Enthusiasts
Vermont Mutual Insurance Group
Washington Electric Cooperative
WDEV Radio Vermont Group

Gold (\$250 - \$499)

Rep. Janet Ancel
Kathryn Bavuso
Terry Beuhner
Mary Jane Bosworth
Fred and Linda Brownson
Calvin Coolidge Presidential
Foundation
Jack Carter
Mary Ann and Bob Chaffee
Bonnie Clause and Michael Hogan
Jan Eastman and John Marshall
Mr. William B. Gannett
Manuel M. and Mary Garcia, Jr.
S. R. Goody
John Grosvenor
Collier Hands
Penrose and Schuyler Jackson
Tim Jerman
Eugene and Joan Kalkin
Robert and Barbara Levine
Bill Lippert
Mr. Christopher McVeigh
Ronald Miller and Jackie Fischer
Sarah and Duncan Ogden
Jim Reardon
Rock of Ages Corporation
Michael Sherman
George E. Spear II
Steven C. Swett
Tess Taylor and Kurt Seymour
Vermont Distillers, Inc.
Mark Yorra and Catherine Gates

Silver (\$100 - \$249)

Against The Grain Gourmet
Foods LLC
Jan Albers and Paul Monod
Jim and Anita Alic
C. Donald and Sara Allen
Anonymous
Ms. Nancy Audet
Melito and Asuncion Balón
Ms. Donna Barnes
Scott Bassage
Allen and Martha Beach
Jeff and Julie Benay
Ms. Kathryn Bennett
Frederic Bertrand
Les Blomberg and Brenda Hausauer
Jay Boeri
Elizabeth and Theodore Bogner
J. David and Marianne Book
William and Ruth Botzow
Ronald L. Bouchard
Bridgewater Historical Society
Lisa and Rowland Brucken
Edward Brynn
Mr. Eric P. Butterfield
Sen. Brian Campion
Paul Carnahan
and Eve Jacobs-Carnahan
Brienne E. and David S. Chase
Betty Cheney
Don Clark
The Honorable John M. Conroy
and Mrs. Sarah Smith Conroy
Robert Cooper
David and Edna Curtin
Denise Burt Cushwa
Mr. Jeff Danziger
Julie Davis and Bruce Seifer
Frank and Joan Donath
Erica H. Donniss
Phyllis L. Drury
John Phipard Dumville
Mrs. Jane N. Ewing
Mrs. Janet Fabricius
Franklin Historical Society
Cynthia Gable
Hilarie Gade and John Peters
J. Kevin Graffagnino
and Leslie Hasker
Naomi Graham
Clive Gray
Mr. William Harwood
Ronald and Christina Hirsch
Mr. Travis B. Jacobs
Kathleen M. Kenny
Stephen Kidder
Killington Resort

Stanley A. Knapp
David and Carlie Krolick
Richard and Dorothy Kuerth
John and Bridgid Kulhowick
The Honorable Madeleine
May Kunin
Chuck Lacy and Gaye Symington
Jameson Lacy
Ms. Sylvia Lazarnick
Senator Patrick J. Leahy
and Mrs. Marcelle P. Leahy
Donald and Sandy Leopold
Brian Lindner
Steven and Claudia Mackenzie
Tom and Charlotte MacLeay
Mad River Glen Cooperative
Ms. Cassandra Major
George S. Maniatty
Howard A. Manosh
Klaire and Douglas Martin
William and Kathleen Mathis
Robert and Dorothy McAllister
Ms. Christine F. McClain
James and Lucille McCullough
Steve McLure
Mike McRaith
and Jacqueline Drouin
Duane and Carol Merrill
Bridget and Nick Meyer
John and Karen Miller
Kenneth and Jane Moriarty
Morris and Lillian P Gould
Foundation
Scott Morrison
Robert and Stephanie Morse
Scott and Cheryl Mullins
Nicole and J. Garvan Murtha
Claudia M. Noyes
Andrew Nuquist
Conrad and Anne Ormsbee
Jane Osgood and Ted Hilles
Priscilla Page
Robert and Theresa Paquin
Katherine Paterson
Roger M. Pike
Fred Pond
Mr. Frederick A. Pratt
Mildred Reardon, M.D.
Stephen A. Ribolini
Donald Robisky
Rockingham Meeting
House Association
Alan and Sherry Sancibrian
Howard Sanderson, Jr.
Mr. Randall Sargent
Mr. Sheafe Satterthwaite
Peter and Jacqueline Sinclair

Dale Smeltzer
David and Smith
Smugglers' Notch Resort
Patricia Snee-Mack and Arthur Mack
Springfield Art & Historical Society
Mr. John C. Stewart II
Mr. Colin Tait
The Quarry Kitchen & Spirits
Polly and John Timken
Charles and Mima Tipper
Vermont Businesses for
Social Responsibility
Vermont Heating and Ventilating
Vermont Salumi
Joan and Norbert Vogl
Rep. Tommy Walz
and Mrs. Leslie Walz
Brenda L. Waters, MD
David Webster
The Honorable Peter F. Welch
and Ms. Margaret Cheney
Marcia Wheeler and Susan Prager
Janet and Frank Winkler
Joanne Edson Woodward

Bronze (\$1 - \$99)

Merlin L. Acomb
Vivienne and Mark Adair
Mr. Richard Aiguier
Mr. Steve Aikenhead
AmazonSmile Foundation
Patricia Archambeault
Patti Arrison
Charlie and Rosemary Averill
John Baldor, Jr.
Carl and Penny Baldwin
Irene and Ed Barna
Barre Opera House, Inc.
Mr. Scott A. Bartley
Harold L. Barton
Basin Harbor Club
Jean E. Battelle
Daniel Bean and Jeanette Voss
Barbara Oski Beane
Miss Elsie F. Beard
Carmen Beck
Mrs. Margaret L. Bellak
Ben & Jerry's Matching
Gift Program
Meroa Benjamin
David Bennion and Pam Greene
Ms. Iris Berezin
Agnes Beverley
Ron Biedermann
Charles Billings
Constance Billy
Judith A. Bingham

Celine M. Blais
Amanda Bodell
Jen Boeri-Boyce
Kathleen Bolanowski
Mr. Lawrence J. Boothe
Anne Swingle Borg
Ms. Elisabeth A. Bossi
Nancy E. H. Bowman
Michael Boynton
Daniel Brand
Richard P. Brigham
Mr. Jason Broughton
Ms. Anne G. Bugbee
Ms. Carol Burbank
Phyllis Burke
Kenneth Byrne
David and Kate Cadreact
Mr. Peter Caldwell
Ms. Barbara Callahan
Elizabeth A. Camire
Diane and Alexander Campbell
David C. Cary
Jeff Cashmab
Rita Caslani
Laura Cawley
Dr. John T. Chard
Betty and Michael Charette
Rudy and Anita Chartier
Andrienne Clark
Mr. Daniel A. Coane
Barry Comeau
John and Polly Connell
Caitlin Corkins
Chester Fairbanks Cotter
Leo and Patricia Coutu
Marcie A. Crocker
Guenevere Crum
Kathleen Cullen
Ms. Martha Calvin Knapp Cushman
Prof. and Mrs. Jere R. Daniell
Basil and Carol Day
Kevin DeSanty
Rachel Desilets and Paulette Petelle
Connie and Richard Devins
Mr. Charly Dickerson
William and Leonora Dodge
Deirdre H. Donaldson, M.D.
Eugenie Doyle
Sandra Doyle
Martha C. Drake
Mr. John K. Dunleavy
Ms. Christina B. Dunphy
Kim Ehritt
Anita Ellero
Gregory and Megan Epler-Wood
Sarah G. Epstein
Monica Farrington

Rep. Martha Feltus
Alden L. Fiertz
Mrs. Ruth A. Finn
P Howard Flanders
Darryl and Rebecca Fleury
Flynn Center
Dover Ford
Ms. Priscilla B. Fox
Ms. Kathlyn L. Furr
Ms. Maxine Garfinkel
Kimberly Gates Maynard
Valerie Gieselman
Peter Gilbert and Cynthia Char
Elsa Gilbertson
Cynthia L. Grace
Carol Graham
Lelia Greenewalt
Laura Guevara
Ernest J. Haas
Elizabeth Hansen
and Mary Anne Gangemi
Lisa B. Harvey
Marvin and Barbara Harvey
Donald A. Hay
Ms. Joanne M. Hayward
Jon and Barbara Hebert
Charles and Karen Hermann
Mrs. Joan K. Higgins
Nancy B. Hill
Tom Honigford
and Sharon O'Connor
David and Priscilla Hooper
Hotel Vermont
Ms. Janet R. Houghton
Mr. and Mrs. Robert Howe
Catherine T. Howell
Conrad Hughson
Hunger Mountain Cooperative Inc.
Mr. Kevin Ingraham
Irick Excavating LLC
Mrs. Nancy D. Janson
Ms. Katherine Quimby Johnson
Kenneth and Janney Johnston
Mrs. Sarah S. Joslin
William and Jen Kaigle
Sarah V. Kalinoski
Mary Kapitanski
Jennifer Keller
Ms. Cynthia Kelley
Mr. James Kiehle
Joseph and Elizabeth Kittel
Marian S. Kittell
Mr. Alan C. Knapp
Edward and Dona Koenemann
Drew Kovach
Patricia S. Kules
Brittany Lanza

David and Kathryn Larsen
Mrs. Dorothy E. Larsen
Mr. Robert Lavalette
Mr. Alan Lindsey
Mr. William Lizotte
James Lockridge
Jose Lopez
Rev. and Mrs. R. DeWitt Mallary, Jr.
Ms. Sandra Mangsen
Mr. Charles E. Marchant
David Marquis
Nick Marro
Charlie Martin and June Sundberg
Mr. James A. Martin
Larry and Sue Martin
Susan McDowell
Robert and Polly McEwing
Ms. Sandra H. McKenny
Mr. Howard McRae
Roger and Barbara Menard
John Meyer
Mr. W. John Mitchell II
David Montgomery
Carol Moorman
Ms. Rosemary Morancy
Morse Farm Sugar Works
Sharon Mount
Robert M. Murphy
Peter Nelson
Nelson Ace Hardware
Mr. Burt Nowers
Martha E. Nye
 and Mary Ann Barnes
Edward Oakman
Chris O'Donnell
John O'Hara
Andrew Ojanen
Frank Olney
Gordon and Nancy Olsen
Daniel O'Neil
John and Agnes Ormsby
Mr. Reginald E. Orvis
Elinor Osborn
Edah Lasell Osgood
Mrs. Nancy P. Osgood
Charles Ossola and Barbara Wahl
Solveig Overby
Theresa Pallone

Richard and Ann Park
Leslie and Annette Parker
Wendy and Bob Parrish
Giovanna and David Peebles
Neil and Carleen Pelsue
Bobbie Grothe Penney
Mr. Robert Perkins
Mr. Joseph A. Perron
Nicole Phelps
Peter Van Ness Philip
Ms. Carol Pierce
Ms. Gayle Poinsette
Ms. Myra Poland
Marjorie Power
Perrie Lee Prouty
Barbara Holt Randall
Mrs.Carolynn Ranftle
Ms. Barbara Rathburn
Francis and Joan Rathke
Mr. Hans L. Raum, Jr.
Clinton and Carol Reichard
Mrs. Patricia D. Rennau
Ms. Elisha P. Renne
Mr. J. Tyler Resch
David Ricketts
Harriet Wheatley Riggs
Mrs. Jane Robinson
Anita and Gary Rogers
Helen Rogers
Barbara Roggeveen
James and Kathleen Rohr
Judy P. Rosenstreich
Mrs. Nelda G. Rossi
Michael and Kathy Rouleau
Jean Rubalcaba
Julia Sansone
Sarducci's Restaurant and Bar
Judith Scheibel
Katherine and William Schubart
Robert J. Schulz
Timothy Senter
Joyce Serna
Jerome Shedd
Mr. Allen G. Shepherd III
Bruce P. Shields
Douglas Slaybaugh
 and Nancy Hayes
Jonah Spivak

Carmyn Stanko
Laurel Stanley
Mr. David G. Steinman
Josie Strong and Jim Whipple
Robert and Gael Strong
Skip and Marilyn Sturman
Mr. Frank A. Suchomel, Jr.
Mrs. Margaret F. Sunderland
Stanley J. Tassie
Mrs. Barbara A. Taylor
Nancy Taylor
Charles and Joan Tetzlaff
Barbara S. Thompson
Ms. Caro Thompson
Reverend Pat J. Thompson
Robert Tortolani, M.D.
Rep. Maida F. Townsend
Nancy Tracy
Roberta Tracy and Dan Boomhower
Arthur D. Trezise
Mr. Richard W. Turner
Upper Valley Stamp Club
Ms. Blythe Usher
John and Jeannette Van Blarcom
Mildred Van Nortwick
Vermont Department of Forests,
 Parks, and Recreation
Ms. Winifred S. Vogt
Ms. Irene Walbridge
Graham and Suzanne Wallis
Mr. M. Emmet Walsh
Jim and Jane Ward
Gary and Paula Warner
Thomas and Shari Wetherbee
Deborah L. Wheeler
Henry and Sandra White
Frances B. Whitney
Mr. Franklin C. Whitney
Claire and Alan Wilcox
Patricia R. Wiley
Valarie Wilson
Woodstock History Center
David Wright and Mary Lou Willits
Kinvin and Deborah Wroth
Samuel Yelton
Mr. David G. Zsido

Donors to the Library Collection

Mr. James F. Aher
Lyman and Linda Amsden
Rep. Janet Ancel
Philip and Rosalie Angell

Ann Ashcroft
Mary C. Ashcroft Esq.
Meg Ashcroft
Mary Bagley

Chris H. Bailey
Judeen C. Barwood
Sarah Beaudoin
Dudley Berthold

Charles Billings
Ronald Blake
Mary Jane Bosworth
Rae Brungardt
Douglas Burt
Jane Campbell and Ted Zilius
Mary Carlson
John and Mary Carnahan
Castleton University
Joanna and Stephen Caswell
Joe Cerasoli
Don Clark
Mr. Cameron Clifford
Deborah Clough
Cook Memorial Library
James A. Cooke
Craftsbury Academy
Daryl Cranford
Ms. Pamela Crosby
Danbury Railway Museum
Delaware and Lehigh National
Heritage Corridor
Hilary Dirlam
Sarah L. Dopp
Aaron Downey
Ernie Drown
Vince Franke
Franklin Trask Library
Kathryn Freese
Caroline French
Marjorie Garfield and Art Edelstein
Geneva Historical Society
J. Kevin Graffagnino
and Leslie Hasker
Matt Granai

Green Mountain College
Green Mountain Folklore Society
Thomas Hackett
Caroline Hammarlund
Patricia L. Haslam
Hazelett Corporation
Paul Heller and Marianne Kotch
Annette R. Hernandez III
Mrs. Joan K. Higgins
Brenda Hill
Historical Society Of Middletown
William and Anne Howland
Conrad Hughson
Gary and Linda Isham
Robert Jackson
Virginia Jenkins and Tom Anastasio
Curtis B. Johnson
Jim Jones
Leslie Leggett
John A. Leppman
Brian Lindner
Long Beach Public Library
Frank Lyford
Nancy Lynn
Dick and Linda Marek
John McClaughry
Margaret McCoy
Todd Minsk
Moore Free Library
Ms. Rosemary Morancy
James and Catherine Mulligan
Margaret Murphy
Nantucket Historical Association
Vincent Nicolosi
Andrew Nuquist

Deborah M. Olsen
Patricia W. Osmond
Anthony and Trudy Otis
Ms. Nancy Pearce
Neil and Carleen Pelsue
David Perrin
Richard and Marjorie Petit
John Pingree
Fred Pond
Karen Quinn
Carolee Radline
Anelda Robtoy
Margaret Roche
Mary and Syver Rogstad
Victor Rolando
Salvador and Babic, P.C.
Tim and Janice Sample
Gary Santin
Garry Schaedel
Ms. Rachel C. Sherman
Sherrie Smith
Southern Vermont College
Sharon Spencer
Karen K. Steele
Marjorie J. Strong
Carol Terry
Thetford Historical Society
Janice and Carl Thresher
Mrs. Linda Toborg
Anne Tracy
Dr. Robert Treat, Sr.
Jane Tucker
Prof. Robert E. Weir
Alan Willard
Mark Yorra and Catherine Gates

Donors to the Museum Collection

Judeen C. Barwood
Arlie Buttura Belknap
Mary Jane Bosworth
Robert Bradish
Warren Broderick
Clinton County Historical
Association
Sarah L. Dopp
Samuel Frank
Caroline French
Marjorie Garfield
Mrs. Priscilla D. Hatch

Charles Hermann
Suzanne Hittle
Elizabeth Johnstone
The Honorable Madeleine
May Kunin
Milt Larkin
Timothy Leno
Ann Lipsitt
Mr. Charles E. Marchant
Lynn Bryant Marquedant
Jack Mitchell
Mr. W. John Mitchell II

Patricia W. Osmond
Trudy Otis
Southern Vermont College
John Tarbell
Thunder Road International
Speedbowl
William and Susan Vodrey
Jeannette Walker
Patty Wesley
Cindy Wojcicki

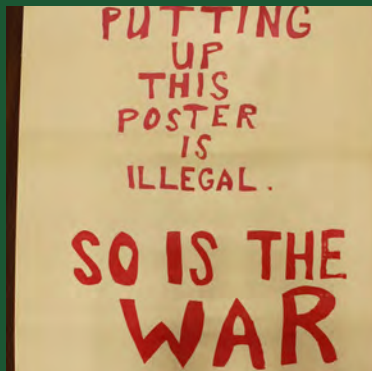
RECENT ACCESSIONS TO VHS MUSEUM COLLECTIONS



Left: Burgundy velvet dress with overskirt and shawl. Worn by Madeleine Kunin, first female governor of Vermont, to her first inaugural ball in 1985.



Right: Screen printed with red ink on white (yellowed) semi-glossy paper. This poster was created between the years of 1965 - 1975.



Above: Small bar of hand soap wrapped in green paper. Produced and distributed by Hotel Brooks in Brattleboro. The hotel building is now known as Brooks House



Left: Blue t-shirt with a red-and-white printed logo of three women's faces in profile. Worn to the Women's March in Montpelier in 2018.



Right: Mandolin with 8 strings and decorative inlay. Used by a member of the Barre, VT Mandolin-Guitar Club, who regularly performed at the Barre Opera House.



Above: Glass plate camera used by George R. Bosworth (1868-1915). Bosworth was an amateur photographer in Central Vermont during the 1890s through 1910s.

RECENT ACCESSIONS TO VHS LIBRARY COLLECTIONS



Left: Laying concrete road surface in Bennington, 1921. This was one of the first hard-surface roads in Vermont. As of 1923, only 45 miles of paved roads had been created in the state.

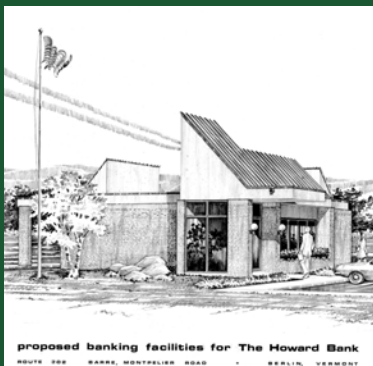


Above: Campaign brochure introducing U.S. Senator Winston Prouty's wife to the voters in his 1964 re-election campaign. He won a 2nd term and was re-elected again in 1970.

Right: Proud workers at Danby Quarry pose with the largest single piece of marble removed from their quarry, bound for Washington, D.C. Date unknown.



Left: This poster represents Vermont's effort to market skiing to the general public in the 1950s, using a new approach of bold, contemporary graphics.



Above: One of over 800 architectural drawings for over 265 projects by Donald McKnight, a self-taught architect from Barre. His buildings often show a modernist flair, but he designed in many styles.

Right: Mary Jane Bosworth (center), granddaughter of Central Vermont amateur photographer George R. Bosworth, and other descendants, donated a collection of over 850 glass plate negatives to VHS.



Members help the Vermont Historical Society care for its priceless collections, present engaging public programs and innovative exhibitions, and serve more than 5,000 students, teachers, and young people each year. Thanks to the support of the following individuals, families, and organizations, we can preserve the past, inform the present, and promote Vermont's shared legacy for future generations.

Business Memberships

Benefactor

Eternity

Supporter

Accura Printing
Cabot Creamery Cooperative
Concept 2 Rowing

Control Technologies Inc
Gravel & Shea PC
Vermont Heating and Ventilating
Vermont Society of Land Surveyors

Individual/Family Memberships

Principal

Claudia and Allen Clark
Prospero Gogo, Jr. and Amy Lilly
Mrs. Joan D. Huguenin
Don Miller
Swenson Granite Company, LLC

Stephen Kidder
Ron and Anita Krauth
Thomas J. and Karen Lauzon
Timothy R. Lewis
Walter and Lois Liggett
Bob and Polly Maguire
Karen and Carl Maklad
Peter and Isabella Martin
Anne Craige McNay
and Colin S. McNay
Sybil and Michael McShane
John Middleton
John and Karen Miller
Ronald Miller and Jackie Fischer
Addison and Adelaide Minott
Kenneth and Jane Moriarty
National Society of Colonial
Dames of America in the
State of Vermont
Katherine Paterson
Walter Phelps
Rudolph Polli
Nancy and Bob Pope
Tommaso and Elizabeth Rendino
Alban Richey III
Alan and Valerie Rogers
Andrea Rogers
Jan and Mary Jane Rozendaal
Shelia Rysz
Andy Shuford and Jeff Prescott
Stephen and Ann Singiser
Allan and Elisa Storti
Bob Summers and Orly Yadin
Steven C. Swett
The Canadian Club of Barre VT
Dave and Pat Thomas
John and Ellen Thompson
Joan Tomasi and Bill Estabrook

Ms. Winifred S. Vogt
Dale and John Wadhams
Richard Wadhams, Jr.

Associate

Reed and Barbara Anthony
Mimi Baird
Stephen Beck
Arthur and Carole Bell
Hollie Bowen and Paul Love
Dr. Ross Brewer
Mark Bushnell and Susan Clark
Diane and Alexander Campbell
Bonnie Clause and Michael Hogan
William G. Congleton
and Patricia A. Prelock
Leo and Patricia Coutu
Peggy Derby
Frank and Joan Donath
Mr. David T. Edsall
Mr. Nicholas C. Edsall
Al Ernst
Frank C. Evans
Mrs. Mary P. Feidner
Freeman, French, Freeman, Inc.
Robert and Sharon Gardner
Grand Isle Historical Society
Clive Gray and Nancy Hill
Fred and Michelle Grubb
Lori and Wade Holt
Jennifer Hopkins
Robert and Marlene Isherwood
Steven and Barbara Jenne
Bill Jessup
Mr. David B. Kelley
Sam and Pat Levin
Bradford and Carol Little
Elizabeth H. Locke

Sustaining

Against The Grain Gourmet
Foods LLC
Rep. Janet Ancel
Ann Aspell
Robert W. Bermudes Jr.
David and Mary Bowers
Fred and Linda Brownson
Edward Brynn
Rev. and Mrs. C. Frederick Buechner
Butternut Mountain Farm
John and Carroll Cabot
Calvin Coolidge Presidential
Foundation
Jack Carter
John and Deborah Cave
John Crabbe and Manon O'Connor
Susan Y. Dyke
Thomas and Dorothy Folger
Newton Garland
Elizabeth Gilligan
Barbara E. Gilman
John Grosvenor
Collier Hands
Chip and Mary Hart
Dr. Phillip L. Howard
Penrose and Schuyler Jackson
Mr. Roger D. Jackson
Tom Johnson and Ina Smith
Diane Kemble
Kathleen M. Kenny

Jeffrey and Tina Marshall
William and Margaret Mather
Mrs. Carol L. Matzke
Thomas McCaughey
Mike McRaith
 and Jacqueline Drouin
Mendon Historical Society
Patricia and Christopher Meriam
William Metro and Sally Stockwell
Peter Nelson
Anna and Chip Noonan
Claudia M. Noyes
Otter Creek Engineering
Ms. Linda D. Paradee
Giovanna and David Peebles
Mary and Syver Rogstad
Newton Rose
Katherine and William Schubart
William and Judy Stevens
Ms. Ruth W. Stewart
Howard and Linda Strong
Josie Strong and Jim Whipple
Robert and Gael Strong
Mr. Colin Tait
Tess Taylor and Kurt Seymour
Thetford Historical Society
Roland and Martha Vigneault
The Honorable Peter F. Welch
 and Ms. Margaret Cheney
Marcia Wheeler and Susan Prager
Donald and Patricia Whelpley
Carleton and Carol Young

Household

Vivienne and Mark Adair
Gary and Blanche Adamski
Bertil Agell
Christopher and Elizabeth Agnew
Jan Albers and Paul Monod
Jim and Anita Alic
Roger and Ann Allbee
C. Donald and Sara Allen
Esther E. Allen
Polly and Kasey Allen
Z. Philip Ambrose
 and Gretchen Van Slyke
Edwin Amidon
 and Louise McCarren
Carl and Evelyn Anderson
John and Susan Anderson
Ms. Marcia Anderson
W. Thomas Anderson
Peter Anthony
 and Marsha Kincheloe
Patricia Archambeault
Mary C. Ashcroft Esq.
Rep. Sarita C. Austin

James and Linda Ballard
Dale and Linda Bartlett
Scott Bassage
Max and Beverly Bassett
Leslie and Dean Baumann
Allen and Martha Beach
Pennie Beach
Daniel Bean and Jeanette Voss
Charles and Candace Beaudette
Stephen and Donna Beaupre
Susan C. Beers
Allison Belisle
 and David VonHolden
Philip and Janie Bell
George and Paula Bellerose
David Bennion and Pam Greene
Ms. Pauline A. Bergeron
James and Judith Bernat
Stephen and Louise Berry
Eric Bessette and Jennifer Baker
James M. Betts, M.D.
Donald and Elizabeth Bicknell
John and Ann Blair
Roger and Susan Bloomfield
Lynn Bonfield and Karen Lewis
James and Marcia Bosek
Rene and Mary Bouchard
Mrs. Betsy Ann Bouton
Karen and George Bowles
Adam and Mary-Anne Boyce
Jennifer Boyer and Tony Klein
Robert and Maureen Brandt
Sophie Brechu-West
 and Antoine Brechu
Dona Brown
 and Stephen Nissenbaum
Eric and Shelley Brown
Geraldine and Bill Brown
Rodney and Sandra Buck
Robert and Pat Burley
Lizabeth Burrell and Geoffrey Ginos
Jeneva and Stu Burroughs
Mr. Eric P. Butterfield
John Buttolph
 and Constance Nadeau
Joseph and Diane Byrne
Scott and Cathleen Cameron
Paul Carnahan
 and Eve Jacobs-Carnahan
Paul and Sandal Cate
Mary Ann and Bob Chaffee
Brianna E. and David S. Chase
Alan and Pam Cheever
William M. Chester, Jr.
David and Susan Childs
Mr. Dale Christie
Janet Clapp and Rich Clark

Gene and Sue Clark
Shirley and Philip Clark
David R. Coates
Mr. Gill B. Coates
Theodore and Patricia Cochran
Art and Anne Cohn
Brian and Anne Collins
Edwin and Nancy Colodny
Anne Straiton Conlin
John and Polly Connell
The Honorable John M. Conroy
 and Mrs. Sarah Smith Conroy
Mary and Stuart Copans
Stephen Corrigan
 and Douglas Jackman
Eulie and Tracy Costello
Michael and Mary Kay Courson
Wavell Cowan
James Cowling
Roger and Susan Cox
Judith and John Crowley
Ann and Fred Curran
David and Edna Curtin
Laurie and Michael Curtis
Denise Burt Cushwa
Keith and Susan Cutting
Martha and Richard Dale
Peter Dale and Emily Jones
Steve and Wendy Dale
Whitney and Barbara Dall
Prof. and Mrs. Jere R. Daniell
Mr. Jeff Danziger
Polly C. Darnell
George and Jean Davis
Mary Jo and Daniel Davis
Betsy Day and Randy Williams
Nicholas and Elizabeth Deane
Amy Demarest and Fred Magdoff
Oneal and Peg Demars
Rachel Desilets and Paulette Petelle
Dennis J. Devereux
Mr. Gerald A. Dexter
Rolf Diamant and Nora Mitchell
Mary Jane Dickerson
Matthew and Anne Dodds
David and Magna Dodge
Prudence Doherty
 and Thomas Buckley
Thomas J.
 and Adrienne R. Donohue
Jim and Diane Donovan
Jim Donovan
 and Patricia O'Donnell
John and Sandra Dooley
Brian Doyle
 and Mary Chris DeBelina Doyle
Sandra Doyle

Teresa Doyle and Chris Reed
Claire and David Duke
Matthew and Ann Marie Durkee
Arlene and Ted Dykstra
David Eckhardt
Peter Elwell and Wendy Harrison
David and Marie Engelman
Gregory and Megan Epler-Wood
Mrs. Jane N. Ewing
Mr. and Mrs. John T. Ewing
Susan and Michael Ferland
William and Marlene Field
Josh Fitzhugh and Wibs McLain
John Follett and Winifred McDowell
Gerald and Anne Francis
Bruce and Darlyne Franzen
Patsy and Patrick French
A. Corwin and Rosalie Frost
Hilarie Gade and John Peters
Paul and Shari Gagne
Connell and Nancy Gallagher
Manuel M. and Mary Garcia, Jr.
James and Donna-Belle Garvin
Barbara and Robert George
Bill and Julie George
H. Allen Gilbert and Lila Richardson
Claire and Eric Gilbertson
Paul and Eileen Gillies
Sandra and Roger Gillim
J. and M. Giuliani
Helen Gjessing
Albert and Joanne Gordon
Alan and Patricia Gould
Garrett Graff
 and Katherine Frances Birrow
David and Sherry Graffagnino
Rosalyn Graham
Al and Sherrill Gregoritsch
Ruth and Thomas Hamilton
Elizabeth and Carl Hammond
Reed and Vanessa Hampton
Elizabeth Hansen
 and Mary Anne Gangemi
Crosby Hard and Deb Alsofrom
Robert and Karin Hardy
Roberta Harold and Wayne Fawbush
Bernadette and Dwight Harrington
Blake Harrison and Rebekah Irwin
Peter and Martha Haskell
Mrs. Martha Haynes
Beth Hayslett and Tim Brennan
Frank and Bonnie Heald
Peter Heaney
Jon and Barbara Hebert
Katherine and Steven Heim
Ben Heintz and Kathryn Leffel
George and Jill Helmer

Cheryl and Ward Heneveld
Carolyn Hignite
Suzanne and Richard Hittle
Jane Hoffman and Ellen Celnik
Michael Huffman
Paul and Peggy Irons
Mary Lynne Isham
 and Steven Adams
Steven and Marilyn Jeffrey
Ms. Catherine E. Johnson
Linda M. Kaiser
Eugene and Joan Kalkin
Cynthia and Maurice Keenan
Kathleen Kelleher and George Lee
Mary and Michael Kenny
Peter and Claudia Kinder
Claire and Michael Kluskens
Mark and Wanda Knapp
Robert and Carol Koch
Edward and Dona Koenemann
Rosie Krueger and Kevin Fink
John and Bridgid Kulhowick
Chuck Lacy and Gaye Symington
Wanda M. Lague
Ms. Sarah A. Laird
Mrs. Karen A. Lancaster
Peter and Joann Langrock
Stallworth and Juliette Larson
Ms. Sylvia Lazarnick
John Lazenby and Carol Vassar
Senator Patrick J. Leahy
 and Mrs. Marcelle P. Leahy
Mr. Marc Lefebvre
Donald and Sandy Leopold
Susanne and Richard Lewis
Thomas and Susan Little
Ms. Robin N. Lloyd
Gary and Betty Lord
Christopher and Ellen Lovell
John and Karyn Lunde
Vito and Patricia Macaluso
Steven and Claudia Mackenzie
Tom and Charlotte MacLeay
Howard A. Manosh
William Mares and Christine Hadsel
John and Mandy Marotta
Nick Marro
Charlie Martin and June Sundberg
Klaire and Douglas Martin
Tracy Martin and David Gross
Jon Mathewson
William and Kathleen Mathis
David and Ruth Matthews
Karen and C. Jean Matthews
Kevin and Eloise Maun
Barry and Denise McCabe
John McCloughry

James and Lucille McCullough
Gloria and Robert McEwen
Robert and Polly McEwing
Leo and Kathy McGinnis
Joyce and Edward McGlynn
Kevin McKenna
 and Marcy Waterfall
James McKnight
 and Leigh MacDonald
J. Michael McNally
 and Shirley Chase-McNally
Barry and Marcia Meinerth
Roger and Barbara Menard
Leigh and Charlie Merinoff
Duane and Carol Merrill
John and Millie Merrill
George D. Milne Family
James and Jean Milne
Mark Mohrmann and Karen Hack
Gary and Linda Moore
Carol Moorman
Ms. Jane Morale
Scott Morrison
Mark and Bonnie Morse
Gilbert and Barbara Mudge
Ronald and Maryann Mullins
Nicole and J. Garvan Murtha
Edward Myers and Edith Poor
Mr. Bradley D. Myerson
Steven Nash
Lewis and Maudean Neill
Philip and Susan Neuberg
Alvah and Merriam Newhall
Penelope and James Nolte
Sherry and Hubert Norton
Martha E. Nye
 and Mary Ann Barnes
Sarah and Duncan Ogden
James and Carol Oliver
Gary and Nancy Olney
Nancy and Victor Olson
Mrs. Mary F. O'Neil
Rachel Onuf and Ben Tiefenthaler
Conrad and Anne Ormsbee
John and Agnes Ormsby
Jane Osgood and Ted Hilles
Charles Ossola and Barbara Wahl
Patrick O'Sullivan
Joan M. Owen
Vernon B. Paddock
Melissa and Martin Padley
Michele and John Pagan
Debbie and Steve Page
Priscilla Page
Richard and Francine Page
Richard and Ann Park
Gary and Sylvia Parker

Wendy and Bob Parrish
David and Dolores Partridge
Carla and Richard Payne
Brenda and Steve Perkins
Bob and Jane Perrin
Scott and Sharon Perry
Kristin Peterson-Ishaq
and Mousa Ishaq
Richard and Marjorie Petit
Lois and Russell Philbrick
Deborah Pomeroy
and Ruthanne Rust
William Porter
and Martha Alexander
Mr. Bruce Post
Mr. Frederick A. Pratt
Hugh and Rosanne Putnam
Paul and Rachel Putney
Michael and Bonnie Raboin
Robert and Catharine Rachlin
Sheryl Rapee-Adams
and Chris Adams
Jack and Wiltrud Rasmussen
Richard Rawson
Joan Reece
H. Driscoll Reid Family
Kristofer and Victoria Reiersen
Charlene and Karl Rinker
Hale and Mary Ann Ritchie
Helen C. Riznik
Theodore and Caroline Robbins
Richard and Dorothy Robson
Anita and Gary Rogers
James and Kathleen Rohr
Mrs. Nelda G. Rossi
Danielle Rougeau
Michael and Kathy Rouleau
James and Gayle Rowe
Anna and Josh Roy
Kevin Ruelle
William and Chila Russell
Mr. Randall Sargent
Thomas and Shirley Saul
George and Susanne Schaefer
Thomas and Maryellen Schaefer
Jonathan Schechtman
and Karin Davenport
Howard and Karin Scott
Diana and Jerome Senturia
Ms. Alice L. Shaner-Simpson
Bob and Monica Shattuck
Donald and Barbara Sherman
David Sichel and Mary Rosholt
Joel Silverstein, M.D.
Peter and Jacqueline Sinclair
Douglas Slaybaugh
and Nancy Hayes

Russell and Susan Slora
David and Smith
James and Laura Smith
Richard and Sharon Smith
Patricia Snee-Mack and Arthur Mack
Lisa and Billy Soo
David C. Spence
Robert and Sarah Steenberge
Mr. John C. Stewart II
Sydney and Heidi Stokes
Anne Stone and Richard Demas
Chris Stone and Deb Noel
Jenny and David Stoner
Connie and Bruce Story
John and Patricia Stotler
Dr. Neil R. Stout
Glenn and Kim Sturgis
Jerry Switzer
and Mary Alice Giannoni
Bruce and Sue Talmadge
David and Susan Taylor
Frederic F. Taylor
Scott and Laurie Taylor
Charles and Joan Tetzlaff
The Tyler Place, Inc.
W. Nicholas and Joan Thorndike
Dr. Kevin P. Thornton
and Maureen A. O'Reilly
Ron and Marilyn Tofani
William and Jane Told
Catherine and Abel Toll
Kyle and Randy Treis
Elizabeth and Philip Tubbs
Union Bank
Anna and Brandon Van Luvender
Patricia and William Vibert
William and Susan Vodrey
Joan and Norbert Vogl
Paul and Ruth Wallace-Brodeur
Jon and Nancy Warner
Richard Warren and Jan McCleery
Mrs. Jenny Warshow
Mildred and James Waterfall
Barry and Elsa Waxman
Donald and Caroline Weaver
Thomas and Rita Weidman
Lorri and Jim Welch
Robert and Carolyn Welch
Lisa Wernhoff and Michele Curren
Addie and Alex Wheeler
Lynn and Ron Wild
Timothy and Sally Wilson
Janet and Frank Winkler
David Wright and Mary Lou Willits
Karen and Don Yaggy
Allen Rice Yale, Jr.
Lisa Yzaguirre

Paul and Sally Zeller
Erik and Ann Zetterstrom

Individual

Christopher Achen
Charlotte Adams
Mr. Earl T. Adams
Leigh Adams
Dorothy Aitchison
Lynn Albers
William Aldrich
Mr. Cedric E. Alexander
Ms. Joan F. Alexander
Ms. Judith L. Allard
Ms. Marjorie A. Allard
Craig W. Allen
Mr. David L. Allen
Donald Gray Allen
Mildred Allen
Mr. Richard H. Allen
Patricia Passmore Alley
Jane K. Alper
Leland A. Alper
Dr. Roger L. Amidon
Lynne Anderson
Robert Anderson
Tobin Anderson
Tom Anderson-Monterosso
Mr. Glenn M. Andres
Rachel Andreyev
Christina Angell
Ms. Lisa Angell
Ann Arms
Cara Armstrong
Mr. Jeffrey B. Aronson
Eugene Ashley
Charles Ashton
Heidi Attfellner
Ms. Claire W. Austin
Mr. Edwin A. Austin
Philip Baker
Mr. Thomas Ball
Richard Balzano
Marilyn Barbato
Barb Barber
Ms. Donna Barnes
Buddy Barnett
Betty A. Barnouw
Deborah Barnum
Fred Barr
Frank J. Barrett, Jr.
Mr. Ken Barrett
Augusta W. Bartlett
Edith Lillie Bartley
Mr. Scott A. Bartley
Harold L. Barton
Judeen C. Barwood

Mr. Douglas G. Bashaw
Carole Bass
Linda Beauchamp
Suzanne F. Beaudin
William Belanger
Stephen Belcher
Mr. Burton R. Bell
Mrs. Nancy Martin Bell
Mrs. Margaret L. Bellak
Mr. Mike E. Belote
Lauren Bennett
Mr. Clark H. Bensen
Ms. Iris Berezin
R. Peter Berg
Ms. Mimi P. Bergstrom
Alan Berolzheimer
Lucille Bertram
Joanne R. Bertrand
Ms. Sherry Bigalow
Edson F. Bigelow
Ms. Lindy Biggs
Daniel Bisbee
Mr. Ethan W. Bisbee
Ms. Mary Alice Bisbee
Cynthia Bittinger
Leslie G. Black, Esq.
Lisa Blacklidge
Celine M. Blais
Mrs. Joanne M. Blakeman
Michael Blakeslee
Robert Blanchard
Francine E. Block
Mr. Lawrence R. Blood
Ron Blumer
Ms. Juanita Boardman
Joseph Bobee
Ms. Pamela Bockes
Kathleen Bolanowski
John Bolton
Mr. Edward Bombard
Mr. Arthur J. Bombardier
Lee A. Bonamico
Mr. Lawrence J. Boothe
Mrs. Elizabeth H. Bordeaux
Anne Swingle Borg
Roselle Borrelli
Ben Boshier
David Bosse
Barbara R. Bosworth
Mary Jane Bosworth
Dennis Bottone
Neil R. Bouffard
Elaine M. Bowen
Kate Bowen
Kathryn Boyden
Michael Boynton
Gayl M. Braisted

Daniel Brand
Mr. Robert C. Brault
Col. Errol C. Briggs
Mary Pat Brigham
Michael Brigham
Richard P. Brigham
Mr. William S. Brigham
Preston J. Bristow Jr.
David A. Bronson Esq.
Ms. Grace Brouillette
Lt. Col. Herman C. Brown
Mr. Martin F. Bryan
Carol Brzezicki
Ms. Anne G. Bugbee
Ken Bunce
Dr. Charles Bunting
Ms. Carol Burbank
Darla Cary Burgess
Robert Burka
Phyllis Burke
Mrs. Catherine H. Burns
Chris Burns
Richard I. Burstein, Esq.
Mr. Patrick Burtis
Mrs. Aida Busconi
Carolyn Buttolph
Mr. George F. Butts
Mr. Arthur Bylow
Kenneth Byrne
David Cadreact
Harriet E. Cady
Susan L. Cain
Mr. Peter Caldwell
Mrs. Sheila Calevro
Jane Campbell
Lucille B. Campbell
Mr. Jerry Carbone
Lyndon B. Carew Jr.
Christian C. Carey
Dr. Philip C. Carling
Ms. Lilian Diana Carlisle
Andrew Carlo
Gene S. Carlson
Mr. David S. Carpenter
Mr. Greg Carpenter
Mr. Thomas Carroll
Christie Carter
David C. Cary
Rita Caslani
Robin Caudell
Andrew P. Cervini
Kim Chase
Mr. Reed Cherington
Ms. Jeanne M. Choquette
Mr. J. Alfred Chouinard, Jr.
Ms. Jackie A. Chouinard
Andrew P. Christiansen

Heather D. Cipolla
Joseph A. Citro
Cary P. Clark
Ms. Jo Ann Clark
Mrs. Michele Clark
Robert G. Clark
Sheila Clark
Mr. Stephen Clark
Mrs. Mary Lou Classen
Laura Cleary
Ms. Rachel Clifton
Mr. Gregory B. Cluff
Mr. Daniel A. Coane
Mary Dodge Cobb
Sherman Cochran
Lucinda P. Cockrell
Howard J. Coffin
Lawrence Coffin
Dr. Roberta Coffin
Tris Coffin
Ms. Sandra B. Collins
Ms. Lynnette Combs
Elizabeth Comolli
Mr. Fred Cook
Ken Cook
Ann E. Cooper
Meghan Cope
Mr. William Corkery
Chester Fairbanks Cotter
Ann Cousins
Jay Craven
Joanne Crawford
Marcie A. Crocker
Matthew Crowley
George Cumming
Elizabeth A. Curler
Maureen P. Dakin
Emilie P. Daniel
Ms. Laura Daudelin
Ms. Rebecca Davenport
Mr. James S. Davidson
Mr. William B. Davies
Allen F. Davis, Ph.D.
Julie Davis
Dr. James Clifford Dawson
Mr. Gary DeCarolis
Mrs. Allison M. Deen
Mr. Kenneth A. Degree
Mr. Marshall A. DeLaire
Adam Demasi
Carissa Demore
Ms. Pauline W. Dennis
Mr. Charly Dickerson
Mr. Richard C. Diehl
Wendy Doane
Ms. Meredith Dodge
William Doelger

Mr. David A. Donath
Barbara A. Donnelly
Erica H. Donnis
Ms. Norma S. Donovan
Ms. Jane E. Dorney
Reverend Louis E. Drew
Heather Driscoll
Ernie Drown
John Duffy
Ennis Duling
Mrs. Ann M. Dunleavy
Mr. John K. Dunleavy
Ms. Christina B. Dunphy
Nancy Dutton
Mrs. Betty Ann Dzelzitis
Peggy Eastman
Chuck Eaton
John Eby
Mr. Ralph G. Eddy
George Edson
Judith Edwards
Vicki L. Edwards
Mr. Arthur S. Ellis
Ms. Rebecca M. Ellis
Joseph E. Ellovich
Ms. Marjorie Elwood
Sanford England
Mr. Andrew M. Erickson
Darryl Estey
Ms. Sylvia Ewerts
Ms. Mary L. Eysenbach
Robert M. Fairbanks
Mr. Peter Falion
Jennifer Falvey
Mr. Frank A. Farnsworth
Prof. Brian D. Farrell
Charles H. Farrell IV
Hilari Farrington
Monica Farrington
Mr. Cedric H. Farrow
Mr. Francis Favreau
Glenn Fay
Maryann Feeney
Mr. Vincent E. Feeney
Ms. Roberta J. Ferguson
Dr. William M. Ferraro
Douglas Ferris
Mrs. Ruth A. Finn
Charles K. Fish
Mrs. Debbie Fiske
P Howard Flanders
Ms. Frances Flannery
Josh Fletcher
Bruce K. Flewelling
Mr. Alan Florucci
Ms. Mary Floyd
Ms. Nola A. Forbes

Ms. Patricia A. Forbes
Dover Ford
Ms. Samantha Ford
Adam Forguites
Ms. Ellen F. Forshaw
Wayne L. Foster
Mr. Gerald B. Fox
Ms. Priscilla B. Fox
Ross Allen Fox
Joseph Frank
Sarah Franklin
Mary H. Fregosi
Mr. Paul Friday
Ms. Jill M. Fritz
Mr. James S. Fry, Esq.
Mr. Gregory Furness
Mary K. Gade
Mr. Marvin F. Galarneau
Ronald Gallas
Leane P. Garland
Mr. Walter B. Gates
Janet S. Geer
Kate Gehring
Mrs. Janice Gendreau
W David George
Mrs. Kathleen B. Getman
Elaine Geyer
Ms. Paige Gibbs
Michael Gilbar
Elizabeth Gilbert
Peter Gilbert
Arthur W. Gilbert, Sr.
Elsa Gilbertson
Ms. Karen Gillam
Mr. Willis S. Gilman
Ms. Susan Gilmore
June T. Giroux
Ms. Ruth P. Gminski
Ms. Leah G. Goat
Mary Ann Godin
Mr. Dean L. Goodrich
Ms. Judith G. Goss
Ms. Jean Gosselin
Ms. Karin W. Gottlieb
Mr. Peter Gould
Mr. Robert Gow
Cynthia L. Grace
J. Kevin Graffagnino
Carol Graham
Christine Graham
Craig Graham
Naomi Graham
Joanne Granai
Ms. Rebecca Grant
Ann Gray
B.J. Gray
Reginald Gray

Mrs. Priscilla A. Grayson
Ms. Anne M. Griswold
Steven Gross
Judy Grosvenor
Kathryn Grover
Rebecca Guenther
Owen D. Gutfreund
Elise A. Guyette
James Haaf
Ernest J. Haas
Patricia Haas
Mr. Robert J. Haas
Christopher Haggerty
Leslie B. Haines
Jane Hakins
Ellen Hall
Marie A. Hall
Karen Halsted
Ms. Amy R. Hamlin
RADM. Warren C. Hamm, Jr.
Burt Hamrell
Mr. James L. Hanley
Robert Hanley
Mr. Paul Hannan
Ms. Barbara M. Hannon
Ms. Patricia Hansen
Edith T. Harding
Deborah J. Hardy
Ms. Shirley J. Harlow
Dr. Donald E. Harpster
Mr. Bernard Harriman
Kathleen McKinley Harris
Lewis Harris, Jr.
Roger D. Harris
Nancy Hartman
Joan Harvey
Peter S. Harvey
Patricia L. Haslam
Mr. James J. Hasson
Ms. Ruth B. Hayes
Ms. Joanne M. Hayward
Helen Head
Harriet H. Healy
Mr. Gerald L. Heffernan
Nick Heintz
Christopher Helali
Sheila Herman
Dr. Ann Herrick
Sally Herring
Mr. Kenneth J. Hertz
Andrea Higginbottom
Mrs. Joan K. Higgins
Mrs. Shelley Hilber
Aldis Hill
Church Hindes
Mr. Terence M. Hines
Ms. Peggy Hirsch

Richard Hittle
Jim Hoag
Maryjean Hochberg
Mr. John B. Holder
Mr. Phil Holland
Fred Holmes
Barbara J. Holt
Ms. Janet R. Houghton
Ms. Mary Houghton
Mr. Carleton J. Howard
Roberta C. Howard
Ralph W. Howe
Catherine T. Howell
Lynda Howell
Catherine P. Hoyt
Mr. J. Parker Huber, Sr.
Mark Hudson
Miss Lisa Hughes
Mr. Thomas A. Hughes
Mrs. Janice R. Hull
Patrick Hutton, Ph.D.
Ms. Mary A. Ide
Mr. Kevin Ingraham
Mr. Fred L. Israel
Ms. Harriet B. Ives
Mr. Travis B. Jacobs
Suzanne C. Jamele
Mr. Thomas R. Jamison
Mrs. Nancy D. Janson
Mr. David Jenkins
Mr. David A. Jenkins
Lawrence Jensen
Tim Jerman
Mr. Arthur S. Johnson
Justine Johnson
Ms. Katherine Quimby Johnson
Ms. Kyle I. Johnson
Bart Johnston
Elizabeth Johnstone
Mrs. Betty A. Jones
Jim Jones
Laurie Jordan
Kathryn Jorgensen
Mrs. Sarah S. Joslin
Allyn Kahle
Judy Kaigle
William Kaigle
Sarah V. Kalinoski
Beth Kanell
Gabriella Karsch
Ms. Adriene Katz
Mr. Dennis Kauppila
Brendan Keleher
Mrs. Nancy S. Kemp
Mr. Wayne G. Kenyon
Sandra Kessenick
Stewart L. Ketcham

Bryon Kidder
Mr. Adam King
Ms. Jane E. King
William B. Kinsley
Mr. Uwe Koehn
Ben Koenig
Gerald Kolb
Mrs. Grace B. Korzun
Catherine Krueger
Patricia S. Kules
Mr. Donald Laackman
Mr. Albert W. Labelle, Jr.
Dr. Angela Labrador
Deborah LaCasse
Tom Lacy
James C. Lahar
Mrs. Ora Marie Lambert
Karen Lane
Mr. Michael G. Laramie
Linda J. Larrabee
David Larsen
Mrs. Dorothy E. Larsen
Joshua Lascell
Mr. John W. Lavelly
Catharine Lawless
Tyler Lawrence
Kenneth Lawson
Melvyn R. Lawson
Mr. Richard LeFever
Leslie Leggett
Marcia R. Legru
Douglas K. Lehman
Timothy Leno
Laurence W. Leonard
David LePitre
Ms. Roseann D. Leute
Mr. Allen H. Levesque
Ms. Sandra M. Levesque
Jan Lewandoski
Chip Lewis
Ms. Katherine S. Lewis
Cathy Lilburne
Christine Lilyquist
Brian Lindner
Mr. Alan Lindsey
Lisa Liotta
Bill Lipke
Mrs. Georgeana M. Little
Virginia Little
Mr. William Lizotte
Ms. Mary Jo Llewellyn
Ms. Catherine M. Lloyd
Betty Ann C. Lockhart
George Longenecker
Jose Lopez
Mr. John E. Lord
Ms. Kathleen M. Lott

Alida Lund
Louise Luring
Rep. Terence D. Macaig
Sean MacFaden
Roderick J. MacLay
Marjorie A. MacNeill
Karen F. Madden, Ph.D.
Ms. Cassandra Major
Dr. James A. Malcolm III
Ms. Sandra Mangsen
Robert Mann
Ms. Sylvia Manning
Mr. Charles E. Marchant
Dr. Howard B. Marcus
Alice Marsh
Ms. Earline V. Marsh
David J. Martel
Celia M. Martin
Mr. James A. Martin
Russell A. Martin
Ms. Stephanie Martin
Owen D. Mathewson, M.D.
Whitney Maxfield
Connie May
David R. Mayhew
Mr. Charles A. Mayhood
Mr. Marshall E. Maynard
Margaret McBride
Stephen J. McCarthy
Ms. Christine F. McClain
Ms. Heidi McColgan
Mrs. Arline E. McCondach
Jeanne McCool
Robert L. McCullough
Susan McDowell
Jay McEvoy
Meghan McGearry
Thomas P. McKenna
Ms. Sandra H. McKenny
Jane M. McKenzie
Lt. Col. William R. McKern
Mr. Don McLean
Mr. Christopher McVeigh
Mr. Jim Merriam
Mr. Frank B. Merrick
Edd Merritt
Daniel A. Metraux, Ph.D.
John Meyer
Mr. Taylor Meyer
Lois Michaud
Mrs. Louise Mier
Christy Mihaly
Judith H. Miller
Mr. Gary A. Mitchell
Mrs. Linda Mitchell
Mr. W. John Mitchell II
Corb Moister

Mr. John P. Monette
David Montgomery
Mr. John S. Moody
Mr. Robert Mook
Dr. Joseph P. Moore III
Karen Moore
Mr. Robert J. Moore
Joyce Nichols Morale
Mr. Glenn B. More
Dr. Muriel E. More
Bill Morgan
Ms. Carole Moritz
Michael Morrill
Mr. Galloway C. Morris
Alice Morrison
Mr. Charles T. Morrissey
Mr. Stuart J. Morrow
Ms. Judith B. Morse
Mr. Robert H. Morse
Maureen H. Morton
Sharon Mount
Mr. James P. Mullally
Robert M. Murphy
Mary Murphy-Blake
Mr. A. Douglas Nadeau
Kathryn Nash-Williams
Thomas Navin
Verna G. Navin
Anne J. Necker
Joseph C. Nelson
Patricia Nelson
Ms. Grace G. Newcomer
Mr. Charles D. Newsham
Forrest Newton
Mr. Steve Niederhauser
Ms. Janet Nielsen
Sen. Alice W. Nitka
Mr. Bernard W. Noble
Gary L. Nokes
Mr. John A. North
Julia S. Northrop
Suzanne Nothnagle
Mr. Burt Nowers
Edward Oakman
Becky O'Brien
James N. O'Grady
Andrew Ojanen
Ms. Justine O'Keefe
Patricia A. Olson
Brian P. O'Neill
Ms. Meghan O'Rourke
Mr. Reginald E. Orvis
Elinor Osborn
Mrs. Nancy P. Osgood
Margaret Page
Francis Paine
Mr. Henry G. Pallmerine, Jr.

Ms. Emily Palmer
Lyssa Papazian
Nicole Paquette
Gene Parent
William L. Parkinson
Ms. Ruth Partridge
Mr. David S. Patrick
Ruth Patrick
Mr. John S. Patterson
Ms. Mary Pavone
Mrs. Peggy J. Peabody
Amy Peacock
Peggy Pearl
Mrs. Loraine M. Pease
Ernestine R. Pepin
Mr. Robert D. Perantoni
Charles C. Perkins
Mr. Robert Perkins
Mr. Robert S. Perkins
Mr. Real E. Perras
David Perrin
Mr. Joseph A. Perron
Albert J. Perry
Dr. Ruth Pestle
Mr. David E. Peters
Natalie D. Peters
Ms. Beverly Petrelis
Jess Phelps
Sharon Phennah
Peter Van Ness Philip
Mr. Steve Picazio
Melissa Pierce
Helen Pike
Roger M. Pike
Keith A. Pillsbury
Karen Place
Julie Plotkin
Ms. Gayle Poinsette
Mr. Charles E. Pollard
Mrs. Susan Pollender
Mrs. Candace L. Polzella
Mr. Robert C. Pomeroy
Fred Pond
Mr. Richard C. Pond, Jr.
Brian Porto
Mr. P. Jeffrey Potash
Rep. David Earle Potter
Mr. Noel Potter, Jr.
Mr. Brian Powell
Katharine A. Powell
Mr. James P. Powers
Thomas M. Powers
Mrs. Elizabeth F. Pritchett
Israel Provoncha
Mr. Patrick E. Purcell
Jo Radner
Ms. Jane G. Radocchia

Matthew Rathbun
Ms. Barbara Rathburn
David Rathburn
Mr. Hans L. Raum, Jr.
Mr. Arthur W. Raymond
Patricia F. Rea
Howard B. Reed, Jr.
Mr. Richard P. Reed
Dorothy F. Reese
William J. Reese
Mr. Lawrence H. Reilly
Ms. Joyce L. Reischuck
David Reissig
Nancy Remsen
Mrs. Patricia D. Rennau
Ms. Elisha P. Renne
Mr. J. Tyler Resch
Mr. Douglas H. Reynolds
Barbara Rhoad
Mr. James Rhodes
Mr. Robert H. Rhodes
William Rice
Gene Richards
Dr. Jean Richardson
Elise Riddel
Mary Ann Riggie
Harriet Wheatley Riggs
Mr. Michael F. Rinzler
Mrs. Ellen C. Robbins
Mrs. Jane Robinson
Donald Robisky
Tim Rockwood
Mr. Richard M. Roderick
Ms. Joyce E. Rodgers
Raymond Rodrigues
Alex Rollins
Mr. Stephen Rollins
James Henry Romer
Vera D. Rooker
Geoffrey Root
Emily Rosenbaum
Mr. Bob Ross
Randolph A. Roth, Ph.D.
Mrs. Leslie Rowell
Christopher A. Roy
Ms. Martha Roy
Ralph Lord Roy
Catherine Royer
Alan A. Rozycki, M.D.
Nora Rubinstein
Mr. James E. Russell
Mary Jane Russell
Rebecca A. Rutledge
Toni D. Ryan
David C. Ryder
Ms. Elizabeth L. Sabine
Jack Sabon

Ms. Paula Sagerman
Ms. Roxana E. Salem
Marylynn Salmon
Catherine Salvador
Patricia K. Sampson
Mr. Gregory Sanford
Gail A. Sangree
Leonardo Santoyo
Elizabeth Saplin
David J. Sargent
John Sargent
Stella Sargent
Ann Satterthwaite
Penilee Saulnier
Mr. Lazarus Scangas
Jesse Scarlato
Todd Scheffer
David E. Schimke
Ms. Christie M. Schultz
David Schutz
Ms. Carol P. Schwenk
Thomas Scrodin
Mr. Timothy D. Searles
Paul Searls
Jocelyn Secker-Walker
Anthony Seeger
Timothy Senter
David M. Shanton
Deborah Shell
Mr. Allen G. Shepherd III
Ms. Rachel C. Sherman
Roderic Sherman
Bruce P. Shields
Jeremy Silansky
Peter Silverman
Ada Kelley Silverstein
Raymond Simonds
Wendy Simperts
Mr. George C. Singer
Mrs. Ellen Sivret
Shirlie Marlene Slater
Ann C. Slayton
Mr. Thomas Slayton
Robert Sloma
Dale Smeltzer
Mr. Jason Smiley
Allen Smith
Mr. Gregory A. Smith
Mr. Robert H. Smith Jr.
Lynne Snyder
Mr. Robert J. Soden
Mr. Lauren N. Solt
Jeb Spaulding
Mr. F. Allen Spooner
Ms. Evelyn Sprague
Rosamond Kent Sprague
David B. Stackpole

Mr. David M. Stameshkin
Carmyn Stanko
Laurel Stanley
Sandra Stearns
Mr. William W. Steele
Ms. Lisa M. Stepancic
Frederick W. Stetson
Mr. Jonathan W. Stevens
Prof. Mark A. Stoler
Mr. Charles Storrow
Jennifer U. Stowell
Ms. Carroll C. Strickland
Fern Strong
Charles Strum
Mr. Frederick D. Sturtevant
Mrs. Margaret F. Sunderland
Mr. Daniel R. Swainbank
Ms. Mary E. Swasey
Rebecca Talcott
Carol J. Tandy
Rob Tarule
Stanley J. Tassie
Mrs. Barbara A. Taylor
Mr. Carl Taylor, Jr.
Thomas Taylor
Robert Tegart
David Thomas
Dr. Matthew M. Thomas
Polly P. Thomas
Barbara S. Thompson
Ms. Caro Thompson
Donald H. Thompson
Reverend Pat J. Thompson
Mr. James Thomson
Richard Thorngren
Mr. James D. Thornton
Polly Timken
Mrs. Linda Toborg
William Toborg
Dr. Bryant F. Tolles, Jr.
Robert Tortolani, M.D.
Susan Tougas
Rep. Maida F. Townsend
Rudolph Townsend
Nancy Tracy
Joseph A. Trenn
Mr. John A. Trepanier
Arthur D. Trezise
Rebecca W. Tucker
Mr. Richard W. Turner
Mr. Vernon D. Turner
Ruth A. Tuthill
Ms. Jane L. Tuttle
Richard Utton
Shawna Valentine
Andrew Van Buskirk
Julie Van Camp

Virginia Van Hazinga
Ms. Robin Van Mechelen
Mrs. Alice C. Van Tuyl
Wilberta L. Veale
Mrs. Carolyn G. Vercoe
Mr. Paul Vermouth
Mr. Paul A. Verret
Thomas D. Visser
Daniel Voisin
Theodore L. von Schoppe
Sarah Vowles
Ms. Ann Wade
Ms. Irene Walbridge
Ms. Cynthia K. Walcott
Roger Walke
Liza Walker
Pam Walker
Ms. Marilyn M. Wallace
Mr. Walter Wallace
Ms. Laura Wallingford-Bacon
Mr. D. Michael Walston
Connie Warren
Dr. Renee B. Warren
Ms. Mary D. Way
Mr. Frederick Webster
Mr. Stephen W. Webster, Esq.
Joanna S. Weinstock, M.D.
Prof. Robert E. Weir
Mrs. Nancy R. Welch
Reginald Welch
Vi Welker
Mr. Robert Wells
Deborah L. Wheeler
Ms. Mary Whitcomb
David G. White
White + Burke Real Estate
Advisors, Inc.
Ms. Linda Whitehair
Dr. Joseph W. A. Whitehorne
Alice G. Whiting
Mr. Franklin C. Whitney
Donald H. Wickman
Patryc Wiggins
Mr. David Wilber
Mr. Roland W. Wilbur
Stanley M. Wilbur, P.E.
Linus Wiles
Mr. Charles E. Wiley
Patricia R. Wiley
Mr. Allen E. Willeford
Bob Willey
Annie Williams
Sarah Williams
Jane Williamson
Heidi Willis
Rick Winston
Mr. Desmond Winthrop

Dolf Wirsing
Nancy Wolfe
Jeremy Wollman
Phyllis N. Wood
Robert B. Wood
Ms. Marilyn C. Woods
Conrad E. Wright
John Wright
Merideth Wright
Stephen Wright
Wendy Dawn Wright
Dean K. Yates
Kenneth P. Yearman, Jr.
Dylan Yeats
Bruce Yelton
Ms. Darlene G. Young
Judith C. Young
Steven Zdatny
Thomas F. Ziobrowski, M.D.
Mrs. Mary L. Zubi
Karl Zurn

Student/Educator

Amy Accles
Jen Boeri-Boyce
Mr. Mark Boonshoft
Lily Fournier
Linda Gustafson
Peter B. Gustafson
Ms. Stephanie L. Skenyon
Wanda Vaughan

Life Members

Prof. Thomas L. Altherr
Miss Hazel J. Anderson
Ms. Hope P. Annan
Miss Elsie F. Beard
Jane C. Beck
Mr. James R. Bentley
Lynn A. Bonfield
J. David and Marianne Book
Allison A. Bourke
Mr. Ian Brodie
Mr. Cameron Clifford
Dr. Armando J. Coello
Ms. Virginia Day
Mr. J. Douglas Dows
John Phipard Dumville
David Flaherty
Ms. Sara Gadd
Mr. William B. Gannett
Mrs. Dorothy Gavin
Ms. Linda B. Gray
Ms. Marion O. Harris
Matt Hedger
Barbara M. Jones
A. Atwater Kent III
Christopher B. Kent
Eliot Hewlett Kent
Mr. Peter A. Kent
Patricia and C. Klinck
Dr. Eugene I. Majerowicz
Mr. William R. Marks, Esq.
Hale Mattoon

Lois Howe McClure
Richard McGovern
Mr. Scott A. McLaughlin
H. Nicholas Muller III
and Carol A. Muller
H. Brooke and Donna Paige
Harriet Stone Patrick
George W. Peck IV
Terry Phillips
Samuel H. Press, Esq.
Mr. Fletcher D. Proctor
Stewart and Dorothy Read
Mildred Reardon, M.D.
Robert H. Rodgers
Mr. Alden M. Rollins
Mr. Sheafe Satterthwaite
Mrs. Barbara D. Schwartz
Michael Sherman
Peter Smith
John and Liz Snell
Ms. Anne F. Spencer
Bayne and Jean Stevenson
Mr. Frank A. Suchomel, Jr.
The 251 Club of Vermont
Mrs. Mary Pat Thompson
Dr. Jennie G. Versteeg
Thomas and Julie Waterman
Mary Faith Wilson
Windham Foundation
Mr. William E. Wolcott
Virginia C. Wood
Constance and Lawrence Woolson

Institutional Members

Addison Town Historical Society, Inc.
Alburgh Historical Society
Allen County Public Library
American Antiquarian Soc.
American Precision Museum
ASU Library Continuations
Bakersfield Historical Society
Barnard Historical Society
Barnet Historical Society
Barre Historical Society
Bellows Falls Historical Society
Bennington Free Library
Berkshire Athenaeum Main Library
Berkshire Historical Society
Berlin Historical Society
Bethel Historical Society
Big Heavy World
Billings Farm & Museum
Boston Athenaeum Library
Boston College –
Thomas P. O'Neill Library

Boston Public Library
Bradford Historical Society
Brandon Museum
Brattleboro Historical Society
Bread and Puppet Museum
and Archives
Bridgewater Historical Society
Bridport Historical Society
Bristol Historical Society
British Library
Brookfield Historical Society
Brooks Memorial Library
Brownell Library
Cabot Historical Society
Calais Historical Society
Cambridge Historical Society
Canaan Historical Society
Castleton University
Cavendish Historical Society
Champlain College Library
Chelsea Historical Society

Chester Historic
Preservation Committee
Chester Historical Society
Chittenden County Historical Society
Chittenden Historical Society
Cincinnati History Library
Cobleigh Public Library
Colchester Historical Society
Concord Historical Society
Concordia University Libraries
Connecticut State Library
Corinth Historical Society
Cornell University Library
Craftsbury Historical Society
Dallas Public Library
Danville Historical Society
DAR - John Strong Mansion Museum
DAR Library
Dartmouth College
Derby Historical Society
Dorset Historical Society

Duke University
 Dummerston Historical Society
 Duxbury Historical Society
 East Middlebury Historical Society
 East Montpelier Historical Society
 Eastern Connecticut State University
 Emory University Serials
 Enosburg Historical Society
 Essex Community Historical Society
 Essex High School Library
 Estey Organ Museum
 Ethan Allen Homestead Museum
 Fair Haven Historical Society
 Fairfax Historical Society
 Fairlee Historical Society
 Fayston Historical Society
 Feinberg Library
 Fenian Historical Society
 Ferrisburgh Historical Society
 Fletcher Free Library
 Fort Worth Library
 Friends of Morrill Homestead
 Georg-August-Universitaet
 Glover Historical Society
 Grafton Historical Society
 Green Mountain Club, Inc.
 Green Mountain Folklore Society
 Green Mountain Perkins Academy
 and Historical Association
 Greensboro Free Library
 Greensboro Historical Society
 Groton Historical Society
 Hancock Historical Society
 Hardwick Historical Society
 Hartford Historical Society
 Hartland Historical Society
 Hartness Library
 Harvard College Library
 Henry Sheldon Museum
 of Vermont History
 Highgate Historical Society
 Historic New England
 Historical Society of Peru
 Historical Society of Windham County
 Howe Memorial Library-
 University of Vermont
 Huntington Historical
 and Community Trust
 Huntington Library
 Indiana University Libraries
 Island Pond Historical Society
 Isle La Motte Historical Society
 Jericho Historical Society
 Jeudevine Memorial Library
 John Woodruff Simpson
 Memorial Library
 Johnson Historical Society

Joslin Memorial Library
 Kreitzberg Library
 Norwich University
 Lake Champlain Maritime Museum
 Lancaster Historical Society
 Landgrove Historical Society
 Lincoln Historical Society
 Londonderry Arts
 and Historical Society
 Lowell Historical Society
 Lunenburg Historical Society
 Manchester Historical Society
 Marlboro Historical Society
 Marquette University Libraries
 Marsh-Billings-Rockefeller
 National Historical Park
 Middlebury College Library
 Middletown Springs Historical Society
 Milton Historical Society
 Missouri Historical Society
 Montgomery Historical Society
 Montpelier Historical Society
 Moretown Historical Society
 Morgan Historical Society
 Morristown Historical Society
 Mount Independence Coalition
 Mt. Tabor/Danby Historical Society
 MUGAR Memorial Library
 National Archives
 and Records Association
 New Hampshire State Library
 New Haven Community Library
 New York Public Library
 Newberry Library
 Newbury Historical Society
 North Hero Historical Society
 Northeastern University Libraries
 Northern Vermont University
 at Johnson
 Northern Vermont University
 at Lyndon
 Northfield Historical Society
 Northwestern University
 Norwich Historical Society
 Old Stone House Museum
 Orwell Historical Society
 Pawlett Historical Society
 Peacham Historical Association
 Pittsford Historical Society, Inc.
 Plainfield Historical Society
 Plymouth VT Historical Society
 Poultney Historical Society
 Pownal Historical Society, Inc.
 Princeton University Library
 Proctor Historical Society
 Purdue University Libraries TSS
 Putney Historical Society

Quechee Public Library
 Randolph Historical Society
 Reading Historical Society
 Richford Historical Society
 Richmond Historical Society
 Ripton Historical Society
 Rochester Historical Society
 Rockingham Free Public Library
 Rockingham Meeting
 House Associaton
 Roxbury Historical Society
 Royalton Historical Society
 Rupert Historical Society
 Russell Vermontiana Collections
 Rutland Free Library
 Rutland Historical Society, Inc.
 Ryegate Historical Society
 Saint Albans Museum Inc.
 Saint Michael's College
 Salisbury Historical Society
 San Antonio Public Library
 Saxtons River Historical Society
 Sharon Historical Society
 Sheffield Historical Society
 Shelburne Historical Society, Inc.
 Shelburne Museum
 Sheldon Historical Society
 Shoreham Historical Society
 Shrewsbury Historical Society
 Smithsonian Institution Library
 South Burlington Public Library
 South Hero Historical Society
 South Londonderry Free Library
 South Ryegate Public Library
 Spaulding High School Library
 Springfield Art and Historical Society
 St. Johnsbury History
 and Heritage Center, Inc.
 Stanford University
 Starksboro Historical Society
 Stockbridge-Gaysville
 Historical Society
 Stowe Free Library
 Stowe Historical Society
 Strafford Historical Society
 Sullivan Museum and History Center
 Swanton Historical Society Inc
 T. W. Wood Art Gallery
 Tinmouth Historical
 and Genealogical Society
 Topsham Historical Society
 Townshend Historical Society
 Tunbridge Central School
 Tunbridge Historical Society
 Underhill Historical Society
 Union College
 Unitarian Church of Montpelier

University of British Columbia Library	Vermont Division	Westford Historical Society
University of California	for Historic Preservation	Westminster Historical Society
San Diego Library	Vermont Granite Museum	Weston Historical Society
University of Chicago Library	Vermont State Society DAR	Weybridge Elementary School
University of Delaware	Vermont Veterans Militia Museum	Whitingham Historical Society
University of Georgia Library	Vernon Historians Inc.	Williamstown Historical
University of Illinois Library	Vershire Historical Society	Society Museum
University of London	Waitsfield Historical Society	Williston Historical Society
University of Maryland	Wallingford Historical Society	Wilmington Historical Society
University of Michigan Serials	Warren Historical Society	Windsor Public Library
University of New Hampshire	Warren Public Library	Winooski Historical Society
University of Notre Dame	Waterbury Historical Society	Winterthur Museum Library
University of Pennsylvania Library	Waterford Historical Society	Wisconsin Historical Society
University of Toronto Library	Weathersfield Historical Society	Woodstock History Center
University of Vermont Consulting	Wells Historical Society	Worcester VT Historical Society
Archaeology Program	West Rutland Historical Society	
Vere Harmsworth Library	West Windsor Historical Society	

The following people have had gifts made to VHS in their memory:

Charles Andrus	Diane Gabriel	C. G. McLure
Peggy S. Baird	James A. Gilbert	Jim Reardon
Sally C. and Richard W. Cary	Morris Gould	Andrew Sansone
Deirdre H. Donaldson	Richard O. Hathaway	Victor R. Swenson
John J. Duffy, Jr.	The Honorable Philip H. Hoff	Edward Taylor

The following people have had gifts made to VHS in their honor:

Nathaniel Babcock	Manuel M. Garcia, Jr.	Barbara B. Mieder
S. Crocker Bennett II	Amanda Kay Gustin	Bruce Yelton

VERMONT HISTORY

Connecting You to Vermont's Story Since 1838

The Vermont Historical Society is a nonprofit organization that operates the Vermont History Museum in Montpelier, the Vermont History Center in Barre, and the Leahy Library in Barre; educates Vermont's schoolchildren; provides support to Vermont's local historical societies; publishes books of historic interest; and offers programming throughout the state and beyond.

Chartered in 1838 by the Vermont Legislature, the Vermont Historical Society's purpose is to reach a broad audience through our outstanding collections, statewide outreach, and dynamic programming. We believe that an understanding of the past changes lives and builds better communities.

The utmost care has been taken in preparing this report. Occasionally, however, errors do occur. We apologize if this has happened and ask that you notify us with any inaccuracies or omissions.

Tori Hart
Director of Development
tori.hart@vermonthistory.org
(802) 479-8516
